



DOCUMENT 009113 – ADDENDUM #2

DATE ISSUED: October 7, 2024

1.1 PROJECT INFORMATION

- A. This Addendum is issued to all registered plan holders pursuant to the Instructions to Bidders and Conditions of the Contract. This Addendum serves to clarify, revise, and supersede information in the Project Manual, Drawings, and previously issued Addenda. Portions of the Addendum affecting the Contract Documents will be incorporated into the Contract by enumeration of the Addendum in the Owner/Contractor Agreement.

- B. Project Identification: Ironwood Carnegie Library
 - 1. Meyer Group Project #: 24-022
 - 2. Project Location: 235 E. Aurora St
Ironwood, MI 49938

- C. Owner: City of Ironwood

- D. Architect:
Meyer Group Architecture, PC
1600 Alworth Building, 306 West Superior Street
Duluth, MN 55802
(218) 727-1330

1.2 NOTICE TO BIDDERS

- A. Groundbreaking construction activities for the project shall not begin prior to March 1, 2025.

1.3 BIDDER QUESTIONS

- A. Just a quick question. I know the spec's overrule the prints but just to be sure the drawings on page A6.1 show the W2 windows as being tempered glass, but it's not spec'd as that. Being quite a bit difference in price I thought I would ask. Should I tell the window supplier that he should price it exactly as is spec'd?

The glazing as specified in Section 088000 is specified as tempered. W2 on the drawings should be revised to also note the glazing being tempered. The intention is for all the window glazing to be tempered.

- B. Are there any preplanning or concept documents required in the bidding submittal for the MEP design build?

No, none required. Any voluntary materials submitted with the bid submittal will be reviewed.

1.4 SPECIFICATION CLARIFICATIONS

- A. This Addendum includes the following clarifications of Specification Sections:

4. 074660 – Fiber Cement Siding
 - a. Add, replace Section 074646 – Fiber Cement Siding in its entirety.

1.5 DRAWING CLARIFICATIONS

- A. This Addendum includes the following Contract Documents Updates and Detail/Section(s):
 1. A1.2 MAIN LEVEL – FLOOR PLAN – BASE BID
 - a. Revise 1/A1.2 and 2/A1.2 Fiber Cement Panel revisions.
 2. A2.1 EXTERIOR ELEVATIONS
 - a. Revise 2/A2.1 Fiber Cement Panel revisions.
 3. A2.2 EXTERIOR ELEVATIONS
 - a. Revise 2/A2.2 Fiber Cement Panel revisions.
 4. A3.2 WALL SECTIONS
 - a. Revise 4/A3.2 Fiber Cement Panel revisions.
 5. A5.1 DETAILS
 - a. Revise 3/A5.1 and 8/A5.1 Fiber Cement Panel revisions.
 6. A6.1 DOOR AND WINDOW TYPES AND DETAILS
 - a. Revise 16/A6.1, 18/A6.1, 19/A6.1, 20/A6.1, 21/A6.1, and 22/A6.1 Fiber Cement Panel revisions.
 - b. Revise A6.1 Window Types W2 note tempered glass.

1.6 PRODUCT APPROVAL

- A. Architectural Approvals:
 1. Section 048100.2.3 Unit Masonry – Cut Stone Panels
Eden Valders Stone – Valders Dark Buff

ADDENDUM #2 – ATTACHMENTS FOLLOW

SECTION 074660 - FIBER CEMENT SIDING

PART 1 GENERAL

1.1 SECTION INCLUDES

- A. Fiber cement lap panels, fascia, moulding and accessories, James Hardie HZ5 Engineered for Climate Siding.
- B. Factory-finished fiber cement panels, fascia, moulding and accessories, James Hardie HZ5 Engineered for Climate Siding.

1.2 RELATED SECTIONS

- A. Section 061000 - Rough Carpentry: Wood framing and bracing.
- B. Section 061600 - Sheathing: Exterior wall sheathing.
- C. Section 072100 - Thermal Insulation: Exterior wall insulation.

1.3 REFERENCES

- A. ASTM C1186 - Standard Specification for Flat Fiber-Cement Sheets
- B. ASTM D3359 - Standard Test Method for Measuring Adhesion by Tape Test, Tool and Tape.
- C. ASTM E136 - Standard Test Method for Behavior of Materials in a Vertical Tube Furnace at 750 degrees C.

1.4 SUBMITTALS

- A. Submit under provisions of Section 0133000.
- B. Product Data: Manufacturer's data sheets on each product to be used, including:
 - 1. Preparation instructions and recommendations.
 - 2. Storage and handling requirements and recommendations.
 - 3. Installation methods.
- C. Shop Drawings: Provide detailed drawings of atypical non-standard applications of cementitious siding materials which are outside the scope of the standard details and specifications provided by the manufacturer.
- D. Selection Samples: For each finish product specified, two complete sets of color chips representing manufacturer's full range of available colors and patterns.
- E. Verification Samples: For each finish product specified, 1 sample, minimum size 4 by 6 inches (100 by 150 mm), representing actual product, color, and patterns.

1.5 QUALITY ASSURANCE

- A. Installer Qualifications: Minimum of 2 years experience with installation of similar products.

1.6 DELIVERY, STORAGE, AND HANDLING

- A. Store products in manufacturer's unopened packaging until ready for installation.

- B. Store siding on edge or lay flat on a smooth level surface. Protect edges and corners from chipping. Store sheets under cover and keep dry prior to installing.
- C. Store and dispose of solvent-based materials, and materials used with solvent-based materials, in accordance with requirements of local authorities having jurisdiction.

1.7 PROJECT CONDITIONS

- A. Maintain environmental conditions (temperature, humidity, and ventilation) within limits recommended by manufacturer for optimum results. Do not install products under environmental conditions outside manufacturer's absolute limits.

1.8 WARRANTY

- A. Product Warranty: Limited, non-pro-rated product warranty.
 - 1. HardiPanel HZ5 vertical siding for 30 years.
 - 2. HardieShingle HZ5 siding for 30 years.
- B. Product Warranty: Limited, product warranty.
 - 1. HardieTrim HZ and HZ5 boards for 15 years.
- C. Finish Warranty: Limited product warranty against manufacturing finish defects.
 - 1. When used for its intended purpose, properly installed and maintained according to James Hardie's published installation instructions, James Hardie's ColorPlus finish with ColorPlus Technology, for a period of 15 years from the date of purchase: will not peel; will not crack; and will not chip. Finish warranty includes the coverage for labor and material.
- D. Workmanship Warranty: Application limited warranty for 2 years.

PART 2 PRODUCTS

2.1 MANUFACTURERS

- A. Acceptable Manufacturer: James Hardie Building Products, Inc., which is located at: 26300 La Alameda Suite 400 ; Mission Viejo, CA 92691; Toll Free Tel: 866-274-3464; Tel: 949-367-4980; Email: [request info \(info@jameshardie.com\)](mailto:info@jameshardie.com); Web: www.jameshardiecommercial.com
- B. Allura of Plycem.
- C. Substitutions: Permitted.

2.2 SIDING

- A. Vertical Siding: Hardie Panel HZ5 siding as manufactured by James Hardie Building Products, Inc.
 - 1. Type: Smooth Vertical siding panel 4 feet by 10 feet (1219 mm by 3048 mm).
- B. Trim:
 - 1. HardieTrim HZ5 boards and HardieTrim HZ boards as manufactured by James Hardie Building Products, Inc.
 - 2. HardieTrim HZ5 Fascia boards as manufactured by James Hardie Building Products, Inc.
 - 3. HardieTrim HZ5 Crown moulding manufactured by James Hardie Building Products,

- 1nc.
4. Artisan HZ5 Accent trim as manufactured by James Hardie Building Products, Inc.

2.3 FINISHES

- A. Factory Primer: Provide factory applied universal primer.
 1. Primer: Factory primed by James Hardie.
 2. Topcoat: Refer to Section 09900 and Exterior Finish Schedule.
- B. Factory Finish:
 1. Product: ColorPlus Technology by James Hardie.
 2. Definition: Factory applied finish; defined as a finish applied in the same facility and company that manufactures the siding substrate.
 3. Process:
 - a. Factory applied finish by fiber cement manufacturer in a controlled environment within the fiber cement manufacturer's own facility utilizing a multi-coat, heat cured finish within one manufacturing process.
 - b. Each finish color must have documented color match to delta E of 0.5 or better between product lines, manufacturing lots or production runs as measured by photospectrometer and verified by third party.
 4. Protection: Factory applied finish protection such as plastic laminate that is removed once siding is installed
 5. Accessories: Complete finishing system includes pre-packaged touch-up kit provided by fiber cement manufacturer. Provide quantities as recommended by manufacturer.
- C. Factory Finish Color for Trim, and Siding Colors: Shall be selected by Architect during Shop Drawing phase from Manufacturer's standard color selection.

PART 3 EXECUTION

3.1 EXAMINATION

- A. Do not begin installation until substrates have been properly prepared.
- B. Notify Architect of unsatisfactory preparation before proceeding.

3.2 PREPARATION

- A. Clean surfaces thoroughly prior to installation.
- B. Prepare surfaces using the methods recommended by the manufacturer for achieving the best result for the substrate under the project conditions.
- C. Install a water-resistive barrier is required in accordance with local building code requirements.
- D. The water-resistive barrier must be appropriately installed with penetration and junction flashing in accordance with local building code requirements.

3.3 INSTALLATION - HARDIE PANEL HZ5 VERTICAL SIDING

- A. Install materials in strict accordance with manufacturer's installation instructions.
- B. Install metal Z flashing and provide a 1/4 inch (6 mm) gap at horizontal panel joints.

- C. Place fasteners no closer than 3/8 inch (9.5 mm) from panel edges and 2 inches (51 mm) from panel corners.
- D. Allow minimum vertical clearance between the edge of siding and any other material in strict accordance with the manufacturer's installation instructions.
- E. Maintain clearance between siding and adjacent finished grade.
- F. Specific framing and fastener requirements refer to Tables 2 and 3 in International Code Council Evaluation Report No. ESR-2290.
- G. Factory Finish Touch Up: Apply touch up paint to cut edges in accordance with manufacturer's printed instructions.
 - 1. Touch-up nicks, scrapes, and nail heads in pre-finished siding using the manufacturer's touch-up kit pen.
 - 2. Touch-up of nails shall be performed after application, but before plastic protection wrap is removed to prevent spotting of touch-up finish.
 - 3. Use touch-up paint sparingly. If large areas require touch-up, replace the damaged area with new pre-finished siding. Match touch up color to siding color through use of manufacturer's branded touch-up kits.

3.4 INSTALLATION - TRIM BOARDS

- A. Install materials in strict accordance with manufacturer's installation instructions. Install flashing around all wall openings.
- B. Fasten through trim into structural framing or code complying sheathing. Fasteners must penetrate minimum 3/4 inch (19 mm) or full thickness of sheathing. Additional fasteners may be required to ensure adequate security.
- C. Place fasteners no closer than 3/4 inch (19 mm) and no further than 2 inches (51 mm) from side edge of trim board and no closer than 1 inch (25 mm) from end. Fasten maximum 16 inches (406 mm) on center.
- D. Maintain clearance between trim and adjacent finished grade.
- E. Trim inside corner with a single board trim both side of corner.
- F. Outside Corner Board Attach Trim on both sides of corner with 16 gage corrosion resistant finish nail 1/2 inch (13 mm) from edge spaced 16 inches (406 mm) apart, weather cut each end spaced minimum 12 inches (305 mm) apart.
- G. Allow 1/8 inch gap between trim and siding.
- H. Seal gap with high quality, paint-able caulk.
- I. Shim frieze board as required to align with corner trim..
- J. Fasten through overlapping boards. Do not nail between lap joints.
- K. Overlay siding with single board of outside corner board then align second corner board to outside edge of first corner board. Do not fasten HardieTrim boards to HardieTrim boards.
- L. Shim frieze board as required to align with corner trim.
- M. Install HardieTrim Fascia boards to rafter tails or to sub fascia.

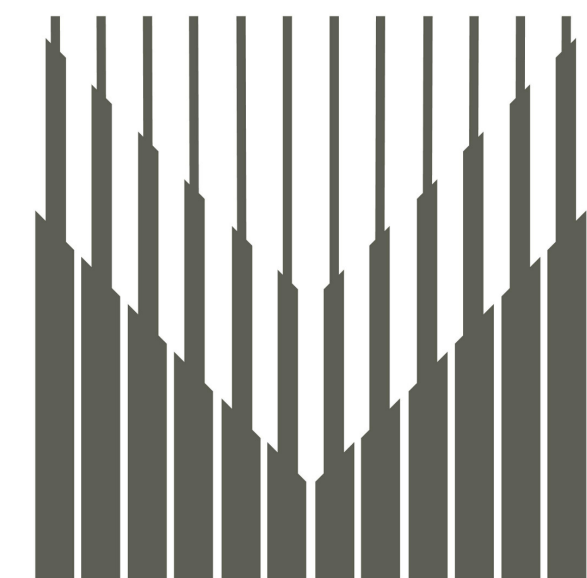
3.5 FINISHING

- A. Follow paint manufacturer's written product recommendation and written application instructions.

3.6 PROTECTION

- A. Protect installed products until completion of project.
- B. Touch-up, repair or replace damaged products before Substantial Completion.

END OF SECTION



MEYER GROUP
ARCHITECTURE

306 W. Superior St. Suite 1600
Duluth, MN 55802
218.727.1330 (phone)

12450 Wayzata Blvd. Suite 227
Minnetonka, MN 55305
952.277.6603 (phone)

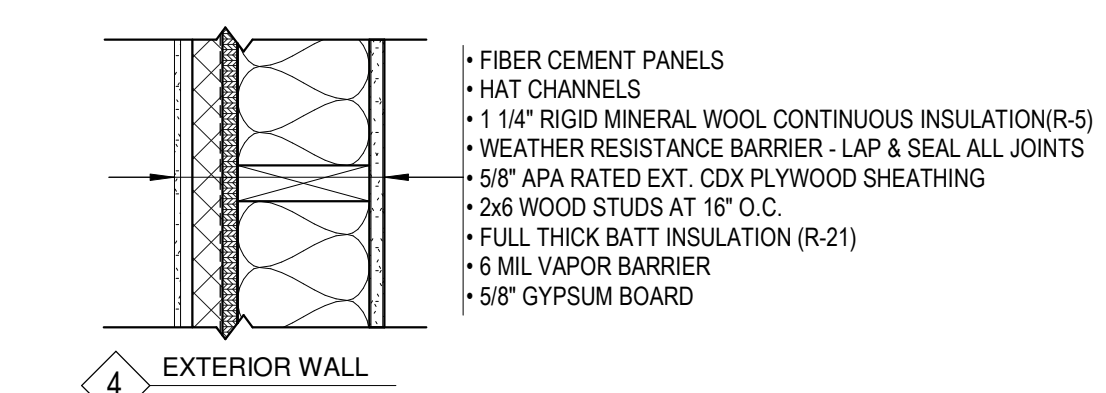
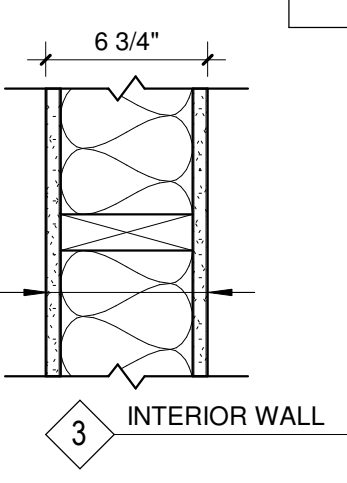
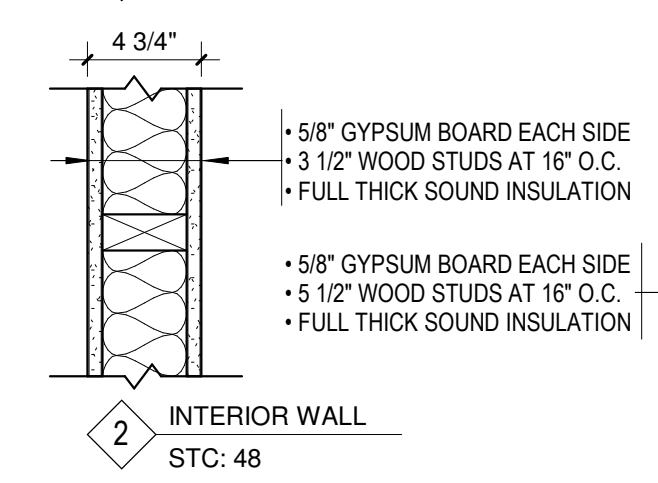
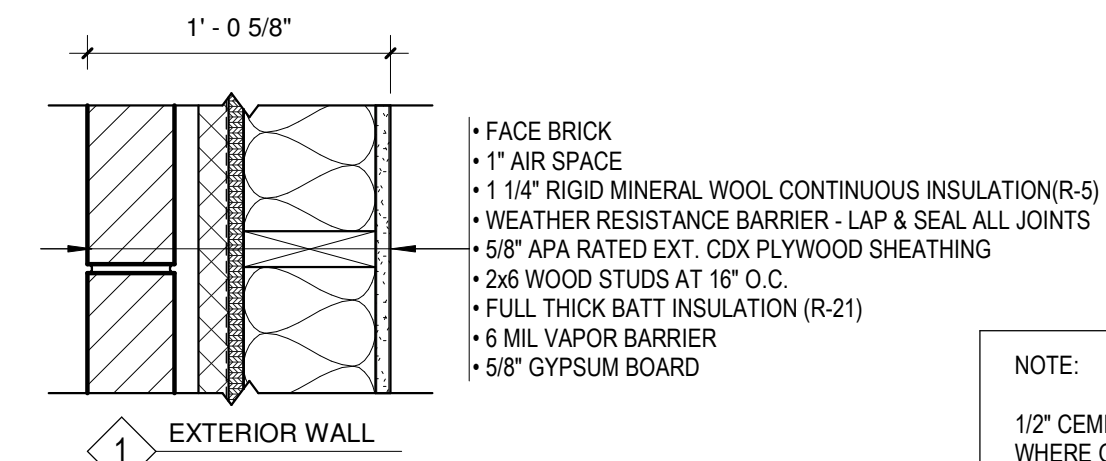
1022 Lakeshore Dr.
Ashland, WI 54806
715.292.6493 (phone)

www.meyergruppduluth.com



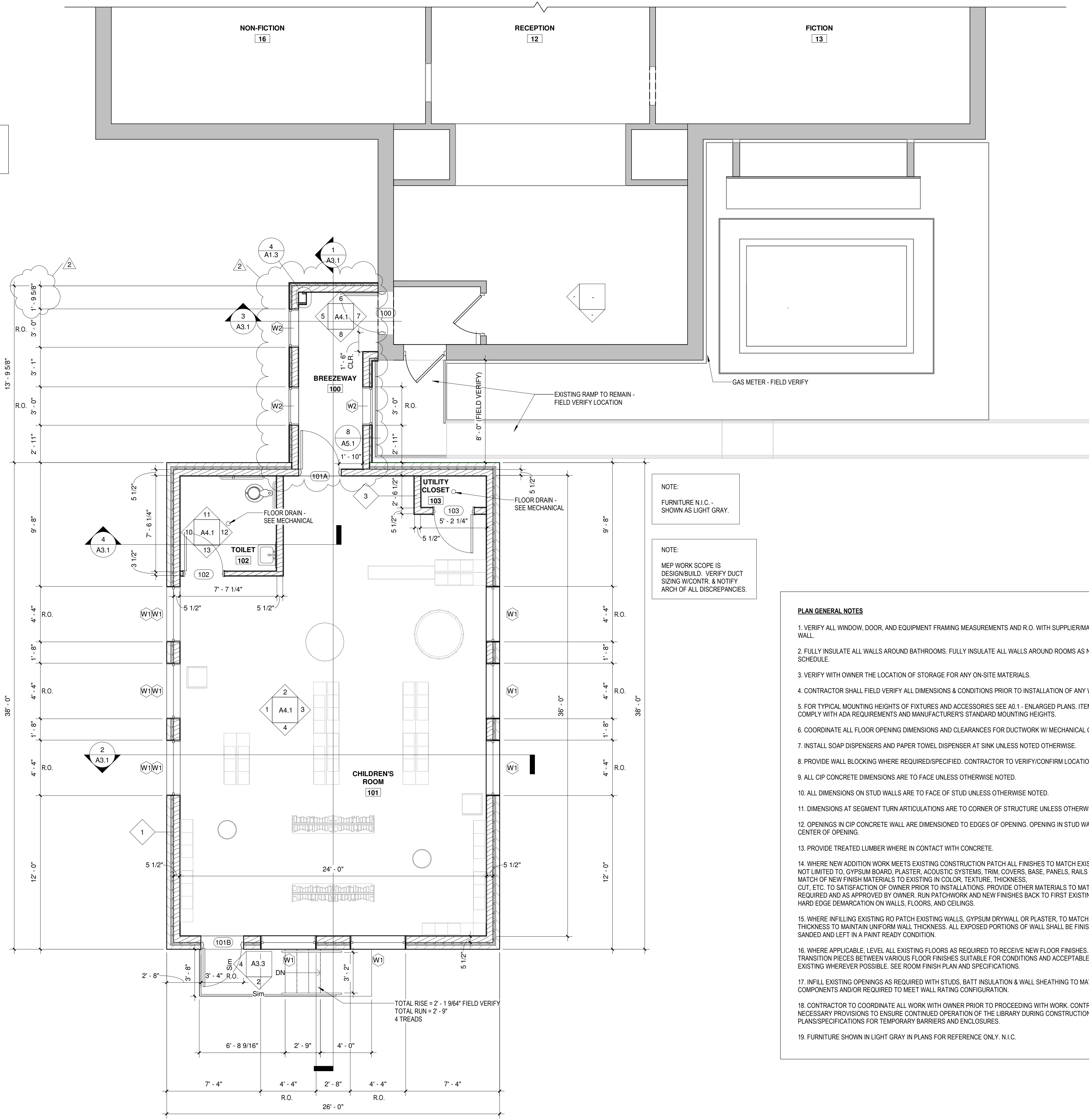
OHM
ARCHITECTS ENGINEERS PLANNERS

OHM-ADVISORS.COM



WALL TYPES
1 1/2" = 1'-0"

NOTE:
1/2" CEMENT BOARD WHERE OCCURS.



NOTE:
FURNITURE N.I.C. - SHOWN AS LIGHT GRAY.

NOTE:
MEP WORK SCOPE IS DESIGN/BUILD. VERIFY DUCT SIZING W/CONTR. & NOTIFY ARCH OF ALL DISCREPANCIES.

- PLAN GENERAL NOTES**
1. VERIFY ALL WINDOW, DOOR, AND EQUIPMENT FRAMING MEASUREMENTS AND R.O. WITH SUPPLIER/MANUF. PRIOR TO FRAMING WALL.
 2. FULLY INSULATE ALL WALLS AROUND BATHROOMS. FULLY INSULATE ALL WALLS AROUND ROOMS AS NOTED IN ROOM FINISH SCHEDULE.
 3. VERIFY WITH OWNER THE LOCATION OF STORAGE FOR ANY ON-SITE MATERIALS.
 4. CONTRACTOR SHALL FIELD VERIFY ALL DIMENSIONS & CONDITIONS PRIOR TO INSTALLATION OF ANY WORK.
 5. FOR TYPICAL MOUNTING HEIGHTS OF FIXTURES AND ACCESSORIES SEE A0.1 - ENLARGED PLANS. ITEMS NOT DEPICTED SHALL COMPLY WITH ADA REQUIREMENTS AND MANUFACTURER'S STANDARD MOUNTING HEIGHTS.
 6. COORDINATE ALL FLOOR OPENING DIMENSIONS AND CLEARANCES FOR DUCTWORK W/ MECHANICAL CONTRACTOR - TYPICAL.
 7. INSTALL SOAP DISPENSERS AND PAPER TOWEL DISPENSER AT SINK UNLESS NOTED OTHERWISE.
 8. PROVIDE WALL BLOCKING WHERE REQUIRED/SPECIFIED. CONTRACTOR TO VERIFY/CONFIRM LOCATIONS.
 9. ALL CIP CONCRETE DIMENSIONS ARE TO FACE UNLESS OTHERWISE NOTED.
 10. ALL DIMENSIONS ON STUD WALLS ARE TO FACE OF STUD UNLESS OTHERWISE NOTED.
 11. DIMENSIONS AT SEGMENT TURN ARTICULATIONS ARE TO CORNER OF STRUCTURE UNLESS OTHERWISE NOTED.
 12. OPENINGS IN CIP CONCRETE WALL ARE DIMENSIONED TO EDGES OF OPENING. OPENING IN STUD WALL ARE DIMENSIONED TO CENTER OF OPENING.
 13. PROVIDE TREATED LUMBER WHERE IN CONTACT WITH CONCRETE.
 14. WHERE NEW ADDITION WORK MEETS EXISTING CONSTRUCTION PATCH ALL FINISHES TO MATCH EXISTING, INCLUDING BUT NOT LIMITED TO, GYPSUM BOARD, PLASTER, ACOUSTIC SYSTEMS, TRIM, COVERS, BASE, PANELS, RAILS AND WAINSCOT. VERIFY MATCH OF NEW FINISH MATERIALS TO EXISTING IN COLOR, TEXTURE, THICKNESS, CUT, ETC. TO SATISFACTION OF OWNER PRIOR TO INSTALLATIONS. PROVIDE OTHER MATERIALS TO MATCH EXISTING WHEN REQUIRED AND AS APPROVED BY OWNER. RUN PATCHWORK AND NEW FINISHES BACK TO FIRST EXISTING CORNER AND/OR HARD EDGE DEMARCATON ON WALLS, FLOORS, AND CEILINGS.
 15. WHERE INFILLING EXISTING RO PATCH EXISTING WALLS, GYPSUM DRYWALL OR PLASTER, TO MATCH EXISTING OF SUFFICIENT THICKNESS TO MAINTAIN UNIFORM WALL THICKNESS. ALL EXPOSED PORTIONS OF WALL SHALL BE FINISHED TO MATCH EXISTING, SANDED AND LEFT IN A PAINT READY CONDITION.
 16. WHERE APPLICABLE, LEVEL ALL EXISTING FLOORS AS REQUIRED TO RECEIVE NEW FLOOR FINISHES. INSTALL REQUIRED TRANSITION PIECES BETWEEN VARIOUS FLOOR FINISHES SUITABLE FOR CONDITIONS AND ACCEPTABLE TO THE OWNER. MATCH EXISTING WHEREVER POSSIBLE. SEE ROOM FINISH PLAN AND SPECIFICATIONS.
 17. INFILL EXISTING OPENINGS AS REQUIRED WITH STUDS, BATT INSULATION & WALL SHEATHING TO MATCH EXISTING WALL COMPONENTS AND/OR REQUIRED TO MEET WALL RATING CONFIGURATION.
 18. CONTRACTOR TO COORDINATE ALL WORK WITH OWNER PRIOR TO PROCEEDING WITH WORK. CONTRACTOR SHALL MAKE ALL NECESSARY PROVISIONS TO ENSURE CONTINUED OPERATION OF THE LIBRARY DURING CONSTRUCTION. SEE PLANS/SPECIFICATIONS FOR TEMPORARY BARRIERS AND ENCLOSURES.
 19. FURNITURE SHOWN IN LIGHT GRAY IN PLANS FOR REFERENCE ONLY. N.I.C.

REVISIONS

No.	Description	Date
2	Addendum 2	10/7/24

IRONWOOD CARNEGIE LIBRARY

**IRONWOOD, MI
MAIN LEVEL - FLOOR
PLAN - BASE BID**

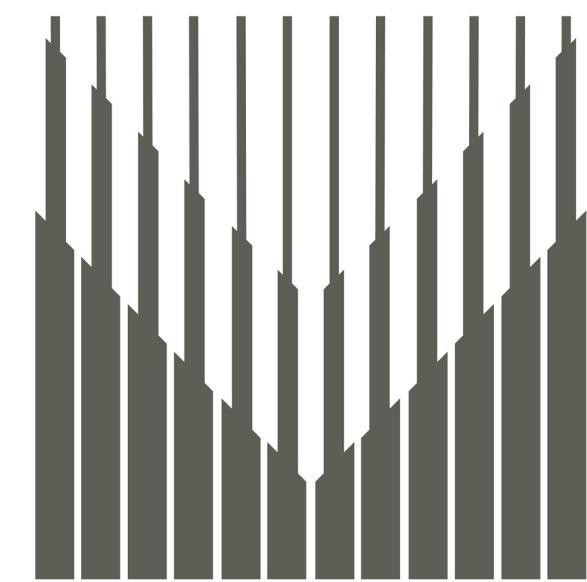
PROJECT NUMBER 24-022
DATE 9-17-2024
DRAWN BY JTF
CHECKED BY TLM

A1.2

1 MAIN LEVEL - FLOOR PLAN - BASE BID
1/4" = 1'-0"



\\ngao01\app01\user\df\j\ustin.fleck\My Documents\24-022 - City of Ironwood - Ironwood Carnegie Library - CD REVISED SCHEME_justin.fleck\WSGJL.rvt



**MEYER
GROUP**
ARCHITECTURE

306 W. Superior St. Suite 1600
Duluth, MN 55802
218.727.1330 (phone)

12450 Wayzata Blvd. Suite 227
Minnetonka, MN 55305
952.277.6603 (phone)

1022 Lakeshore Dr.
Ashland, WI 54806
715.292.6493 (phone)

www.meyergroupduluth.com



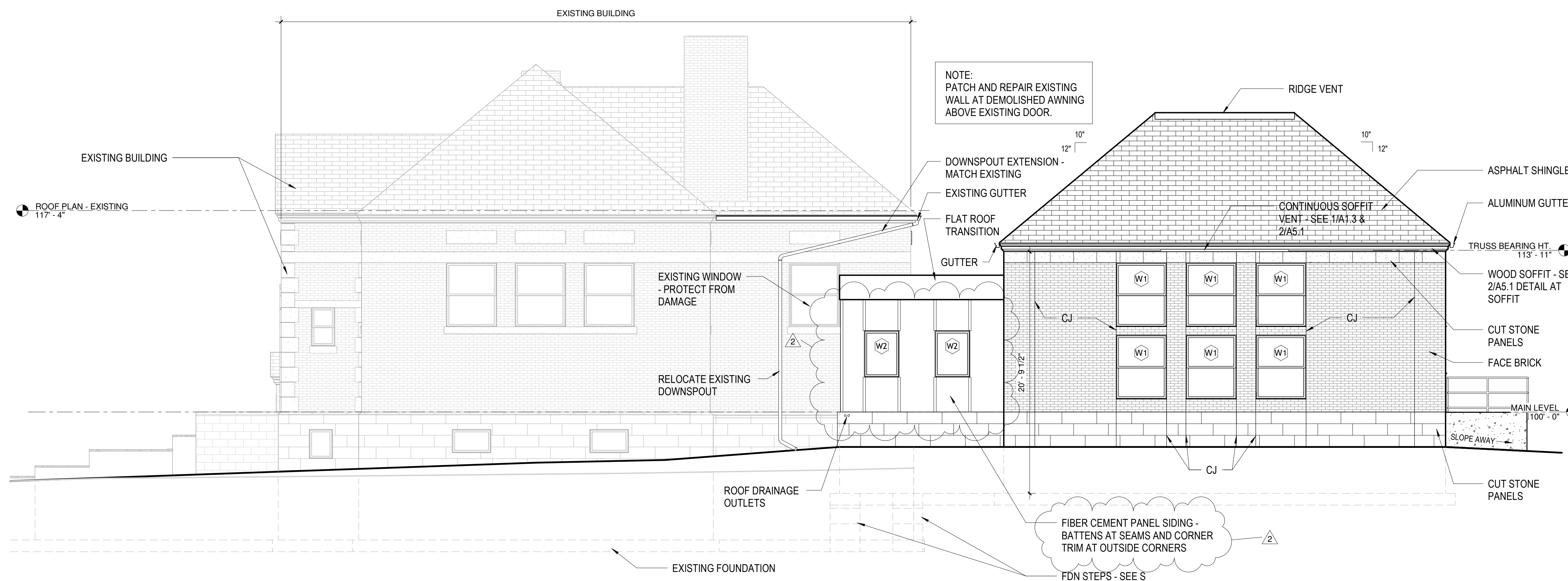
OHM

ARCHITECTS ENGINEERS PLANNERS

OHM-ADVISORS.COM



1 ELEVATION - SOUTH
3/16" = 1'-0"



2 ELEVATION - WEST
3/16" = 1'-0"

REVISIONS

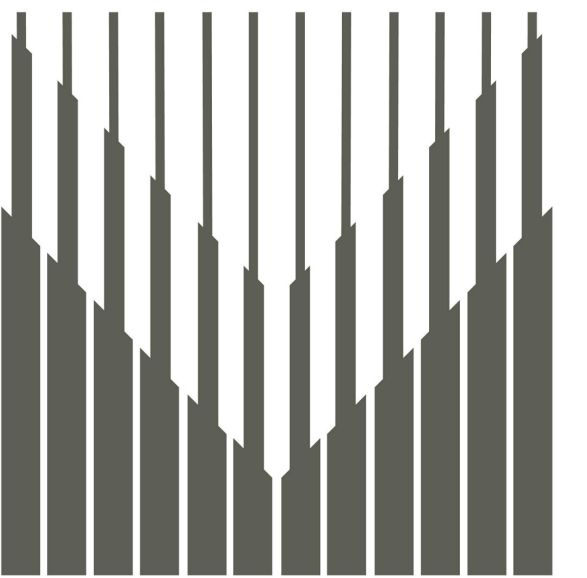
No.	Description	Date
2	Addendum 2	10/7/24

IRONWOOD CARNEGIE
LIBRARY

IRONWOOD, MI
EXTERIOR ELEVATIONS

PROJECT NUMBER 24-022
DATE 9-17-2024
DRAWN BY JTF
CHECKED BY TLM

A2.1



**MEYER
GROUP**
ARCHITECTURE

306 W. Superior St. Suite 1600
Duluth, MN 55802
218.727.1330 (phone)

12450 Wayzata Blvd. Suite 227
Minnetonka, MN 55305
952.277.6603 (phone)

1022 Lakeshore Dr.
Ashland, WI 54806
715.292.6493 (phone)

www.meyergroupduluth.com

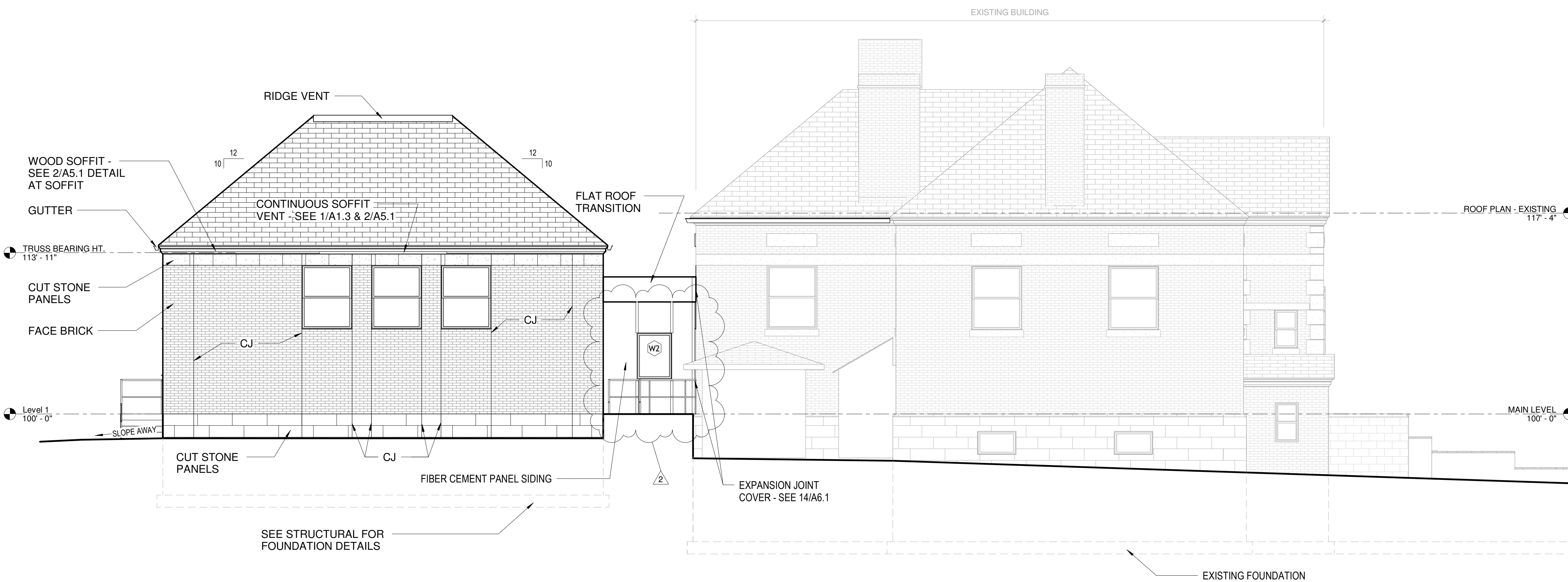


ARCHITECTS ENGINEERS PLANNERS

OHM-ADVISORS.COM



① ELEVATION - NORTH
3/16" = 1'-0"



② ELEVATION - EAST
3/16" = 1'-0"

REVISIONS		
No.	Description	Date
2	Addendum 2	10/7/24

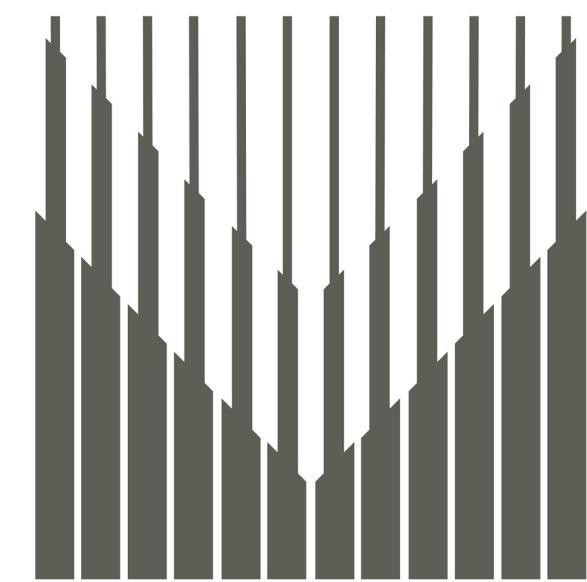
**IRONWOOD CARNEGIE
LIBRARY**

**IRONWOOD, MI
EXTERIOR ELEVATIONS**

PROJECT NUMBER 24-022
DATE 9-17-2024
DRAWN BY JTF
CHECKED BY TLM

A2.2

\\ngao01\app01\userdef\justin.fleck\My Documents\24-022 - City of Ironwood - Ironwood Carnegie Library_CD REVISED SCHEME_justin.fleck\WSGJL.rvt



**MEYER
GROUP**
ARCHITECTURE

306 W. Superior St. Suite 1600
Duluth, MN 55802
218.727.1330 (phone)

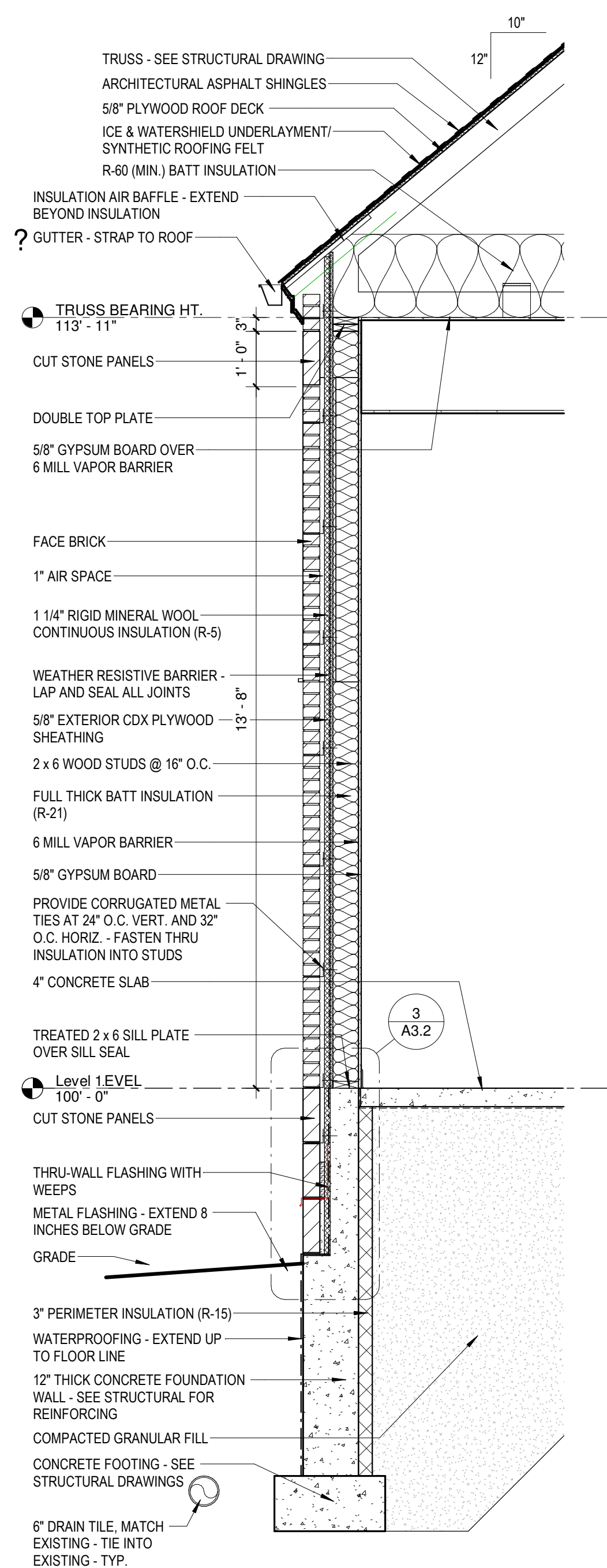
12450 Wayzata Blvd. Suite 227
Minnetonka, MN 55305
952.277.6603 (phone)

1022 Lakeshore Dr.
Ashland, WI 54806
715.292.6493 (phone)

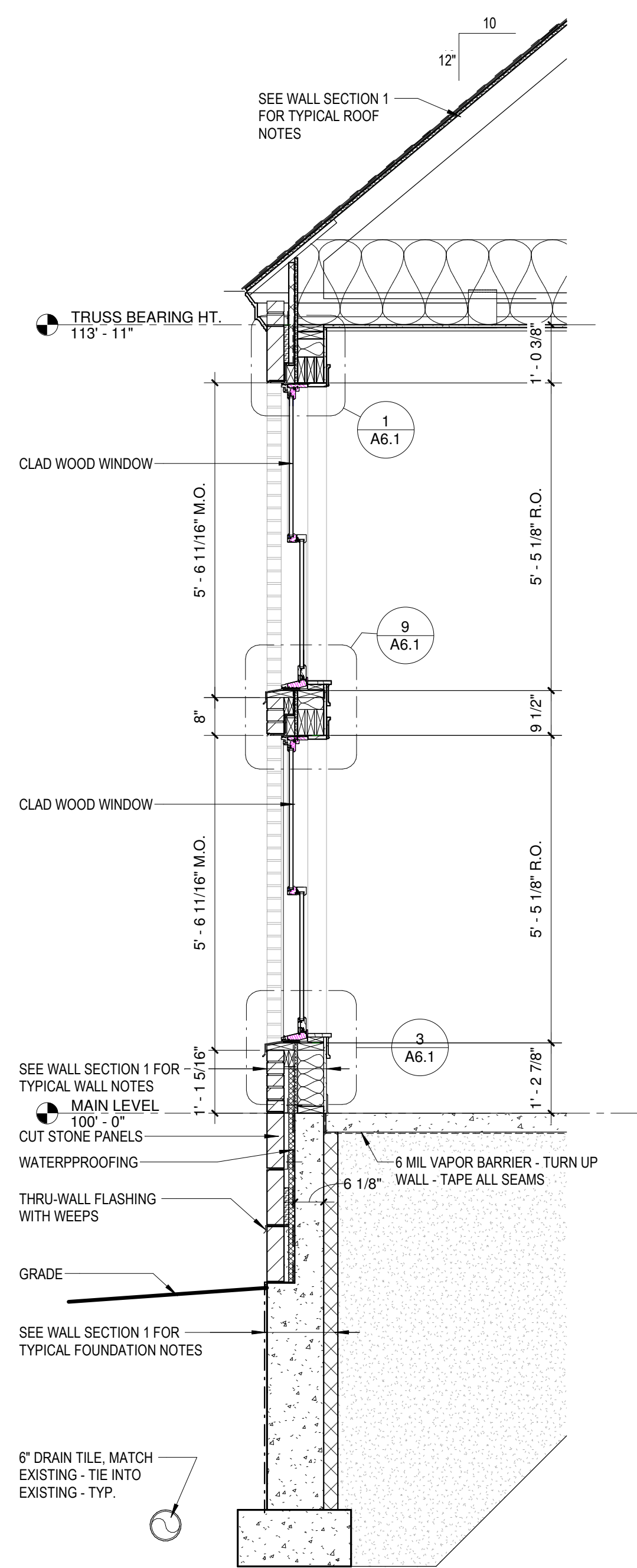
www.meyergroupduluth.com



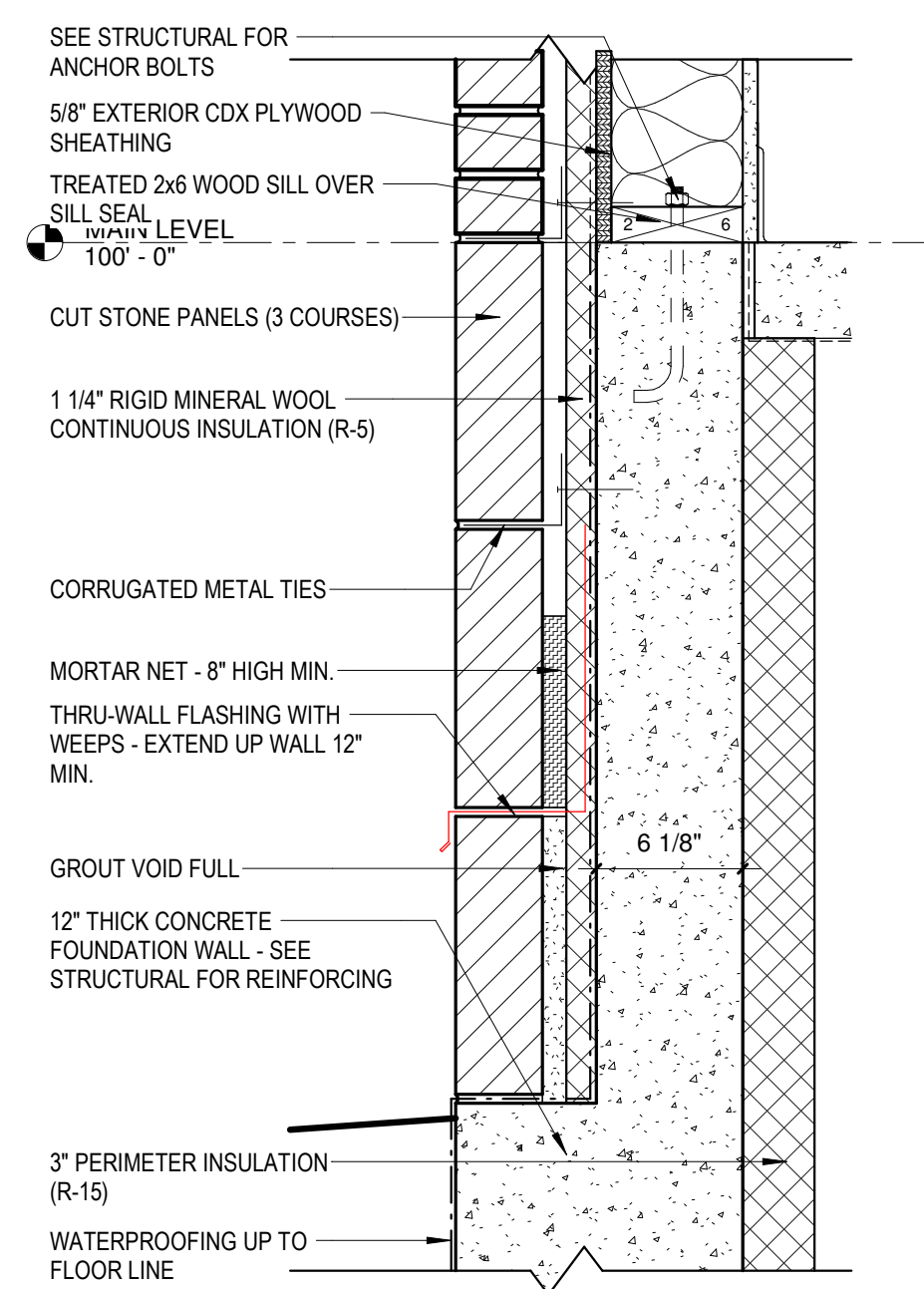
\\ngao01app01\userdef\justin.fleck\My Documents\24-022 - City of Ironwood - Ironwood Carnegie Library_CD REVISED SCHEME_justin.fleck\WSGJ.Lvt



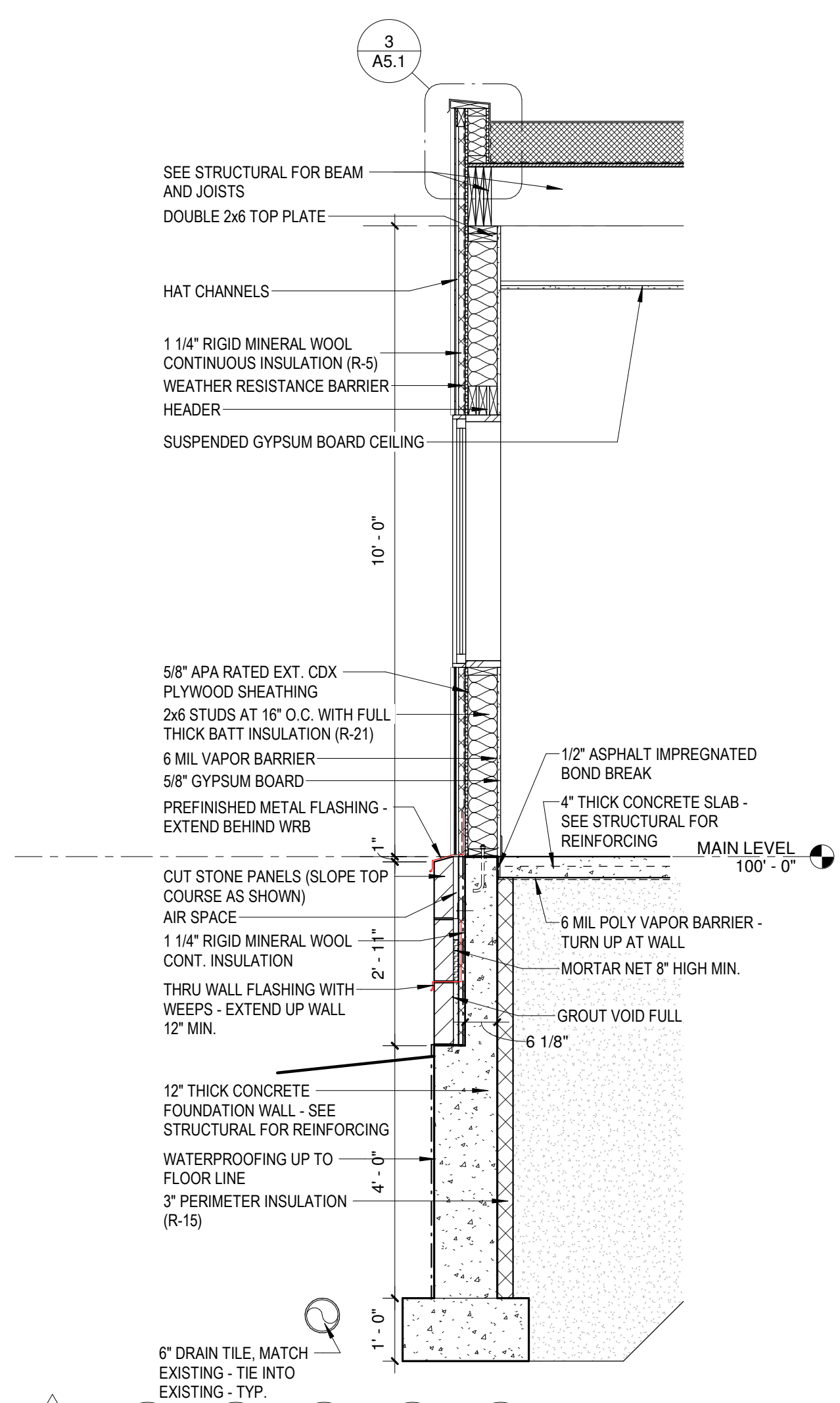
1 WALL SECTION
1/2" = 1'-0"



2 WALL SECTION 2
1/2" = 1'-0"



3 TYPICAL WALL DETAIL AT FOUNDATION
1 1/2" = 1'-0"



4 WALL SECTION AT BREEZEWAY
1/2" = 1'-0"

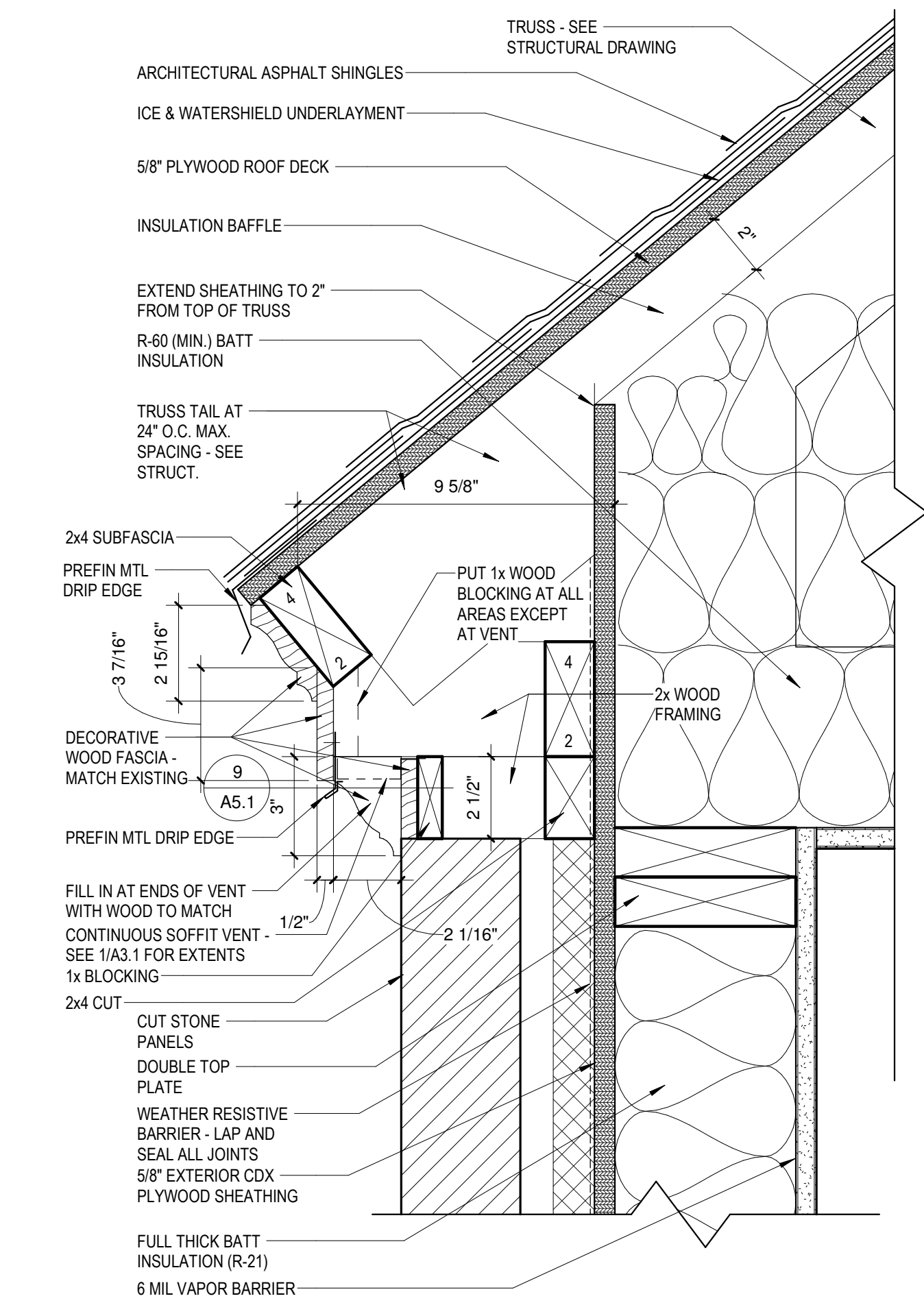
REVISIONS		
No.	Description	Date
2	Addendum 2	10/7/24

**IRONWOOD CARNEGIE
LIBRARY**

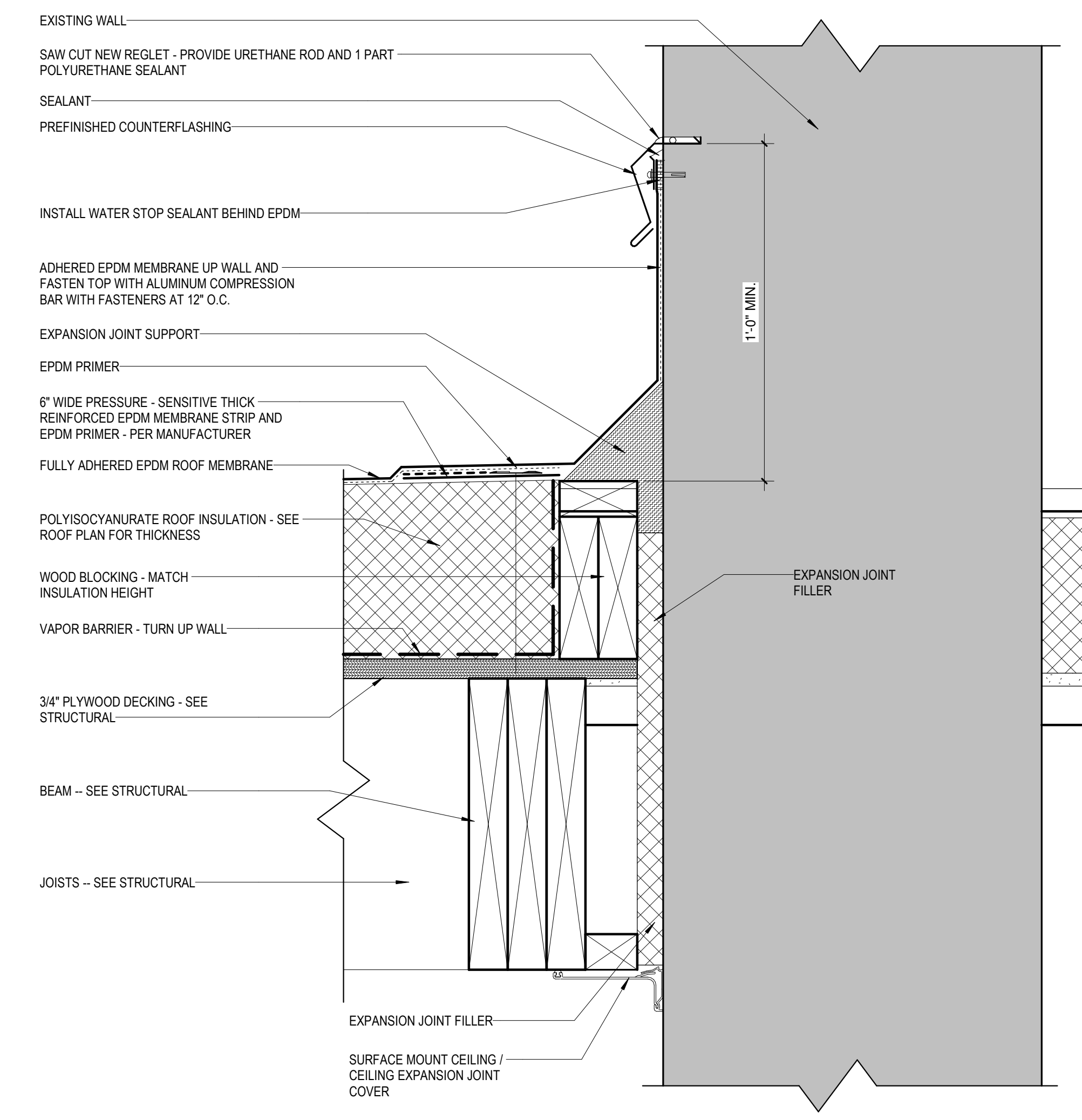
**IRONWOOD, MI
WALL SECTIONS**

PROJECT NUMBER 24-022
DATE 9-17-2024
DRAWN BY JTF, MRH
CHECKED BY TLM

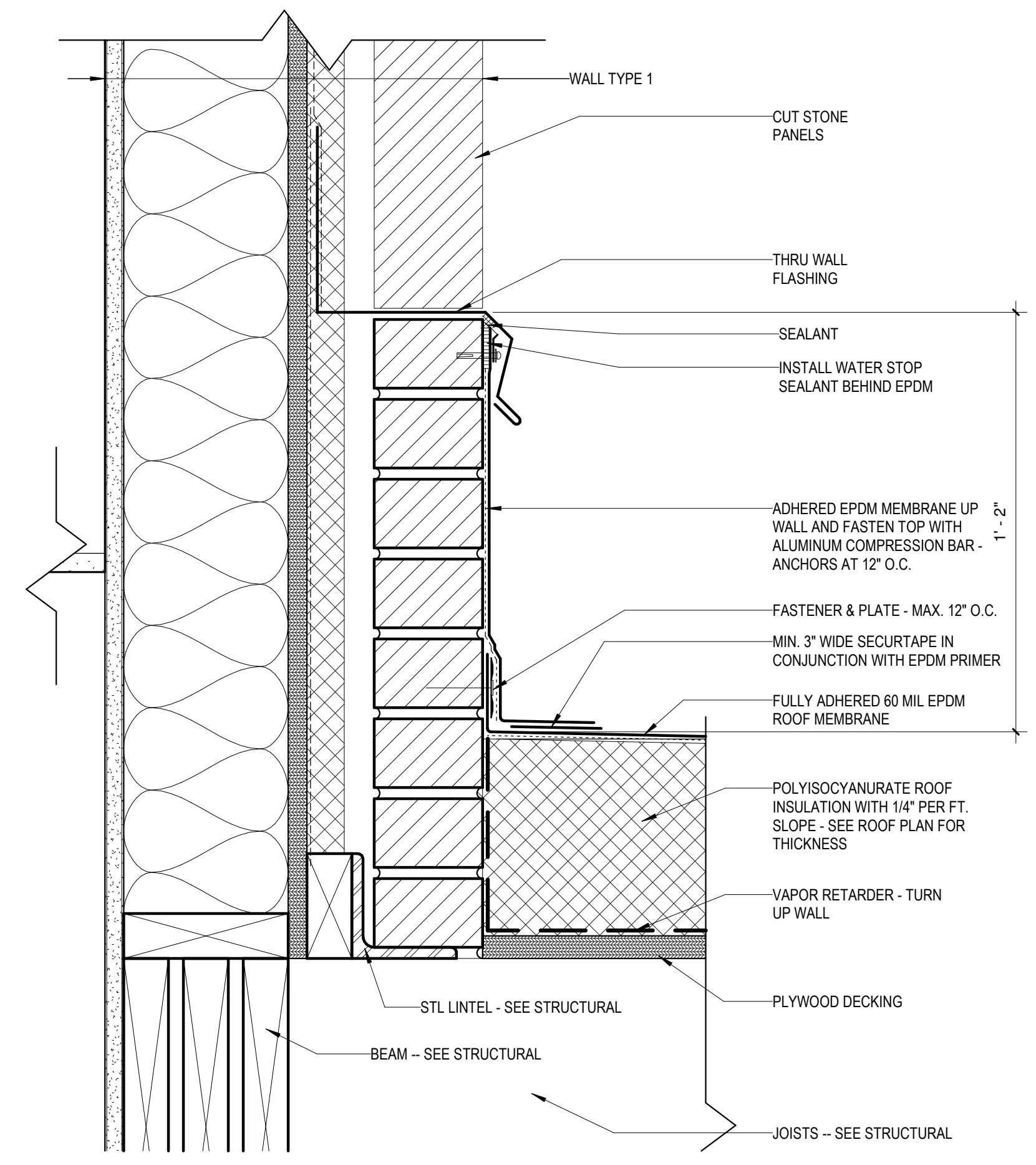
A3.2



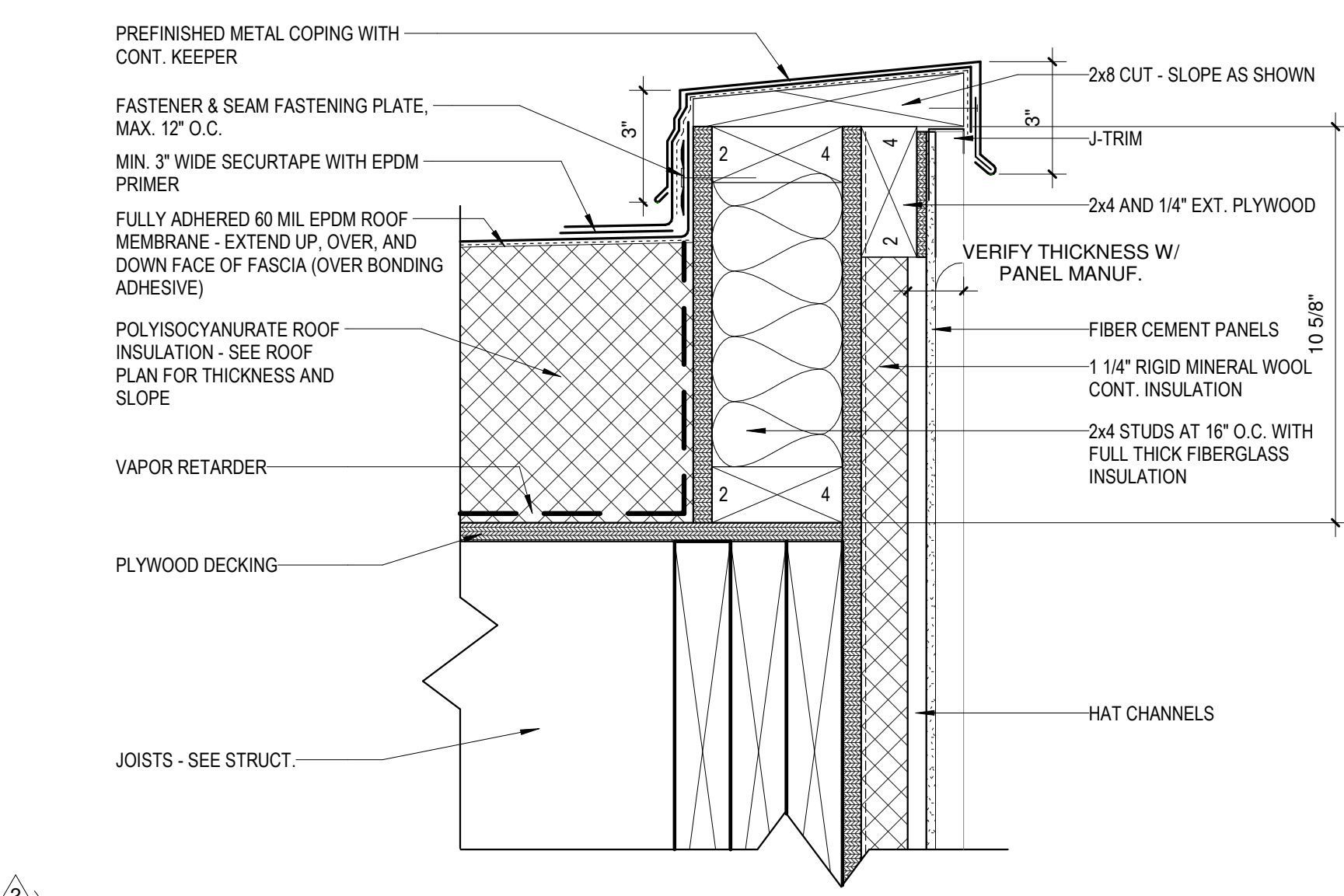
2 DETAIL AT SOFFIT
 3" = 1'-0"



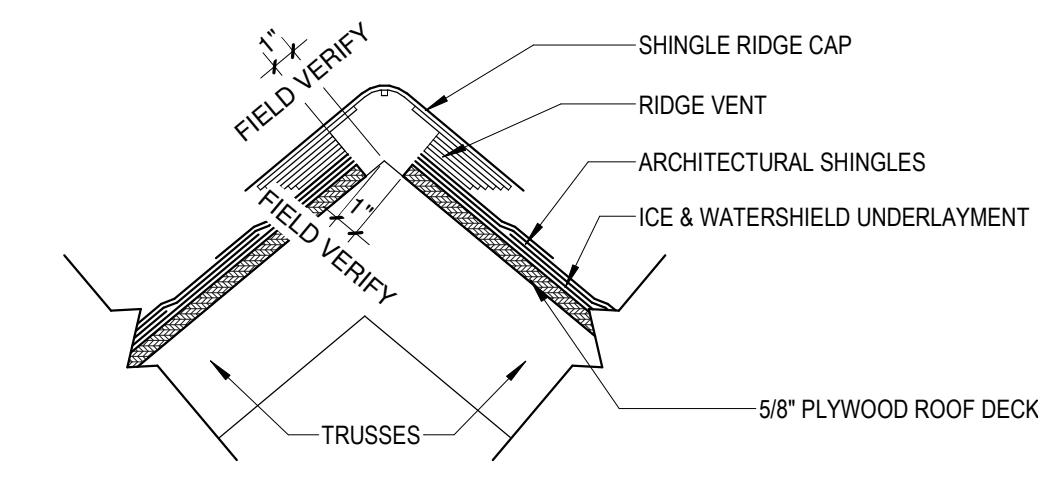
4 ROOF DETAIL AT BREEZEWAY TO EXISTING WALL CONNECTION Copy 1
 3" = 1'-0"



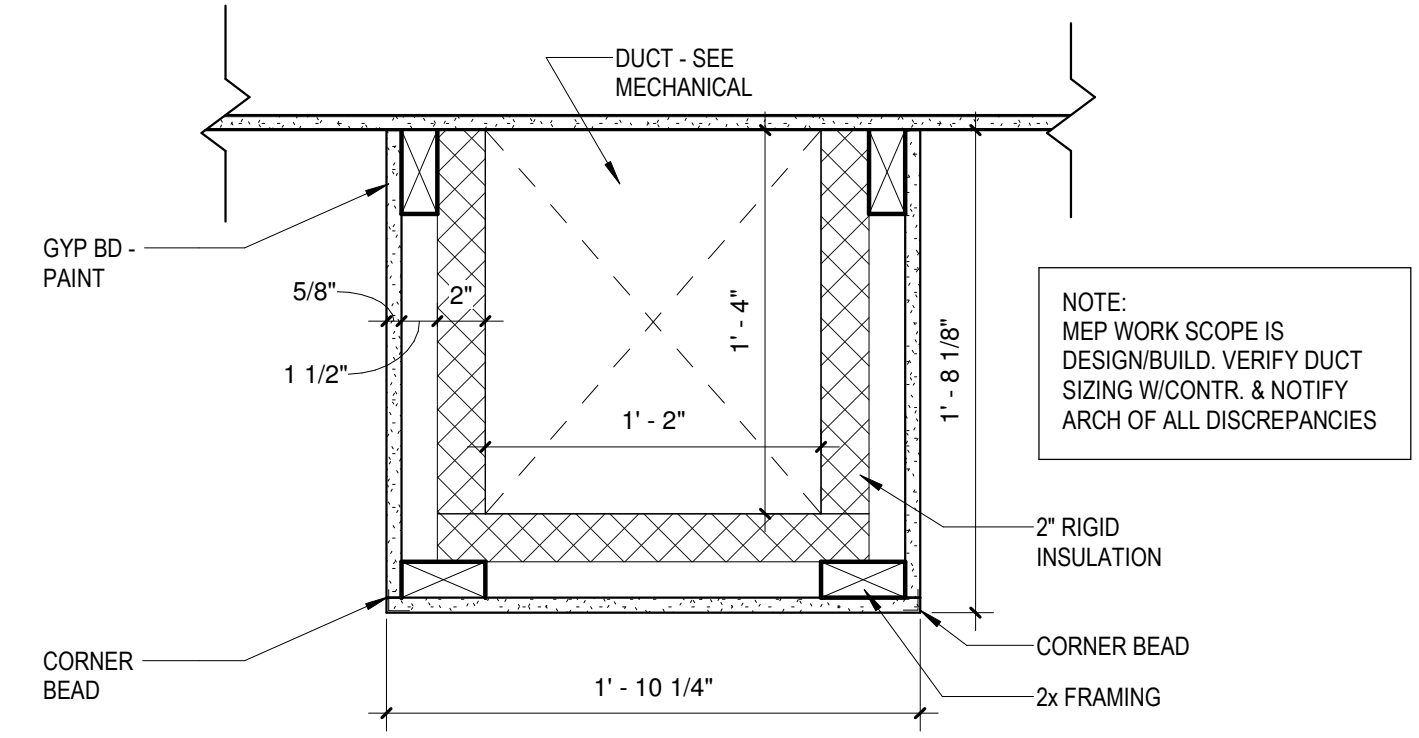
6 DETAIL AT FLAT ROOF TO WALL CONNECTION
 3" = 1'-0"



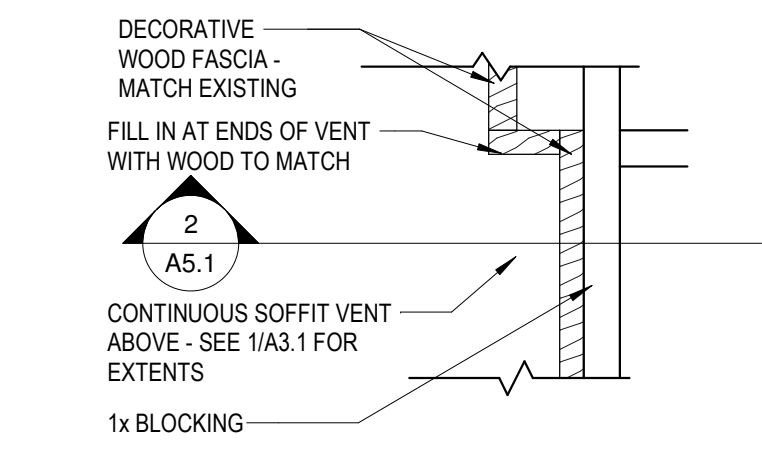
3 DETAIL AT PARAPET
 3" = 1'-0"



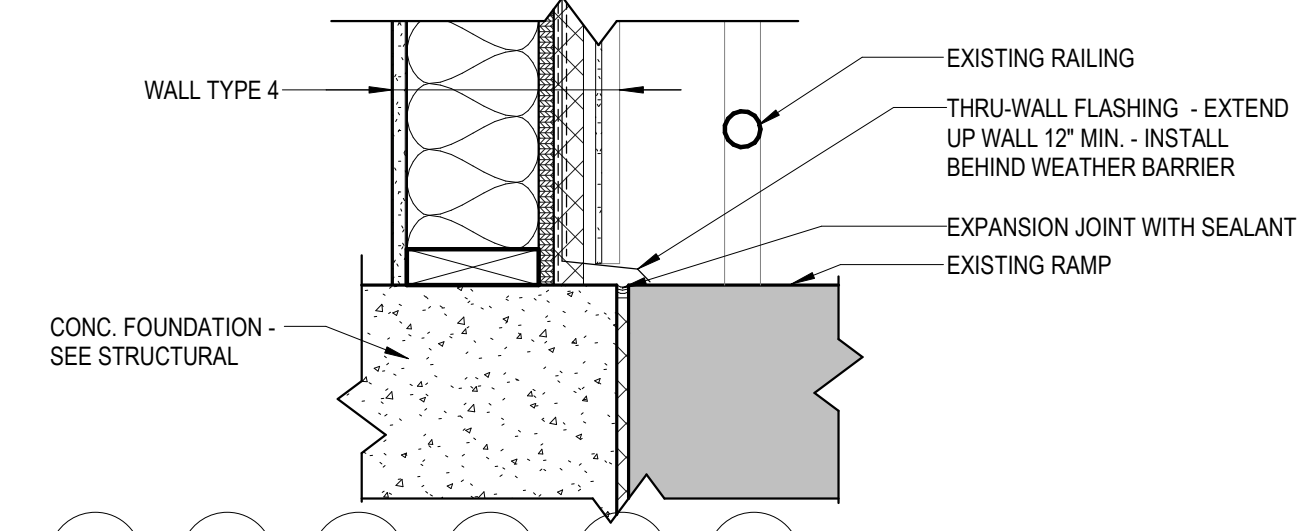
1 RIDGE VENT DETAIL
 1 1/2" = 1'-0"



7 SOFFIT DETAIL
 1 1/2" = 1'-0"



9 DECORATIVE WOOD SOFFIT DETAIL
 3" = 1'-0"



8 WALL AT FOUNDATION EDGE TO RAMP LANDING DETAIL
 1 1/2" = 1'-0"



306 W. Superior St. Suite 1600
 Duluth, MN 55802
 218.727.1330 (phone)
 12450 Wayzata Blvd. Suite 227
 Minnetonka, MN 55305
 952.277.6603 (phone)
 1022 Lakeshore Dr. Ashland, WI 54806
 715.292.6493 (phone)
 www.meyergrouppduluth.com



REVISIONS

No.	Description	Date
2	Addendum 2	10/7/24

IRONWOOD CARNEGIE LIBRARY

IRONWOOD, MI DETAILS

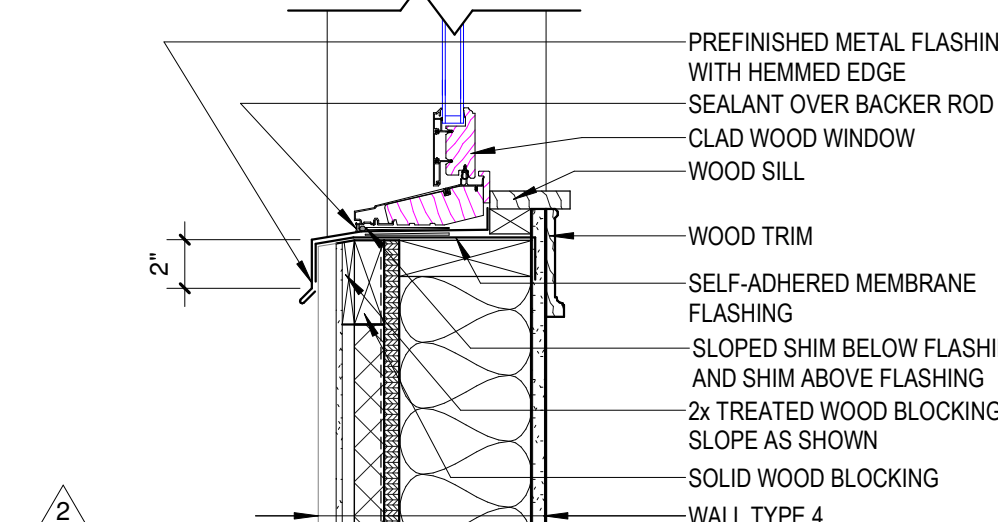
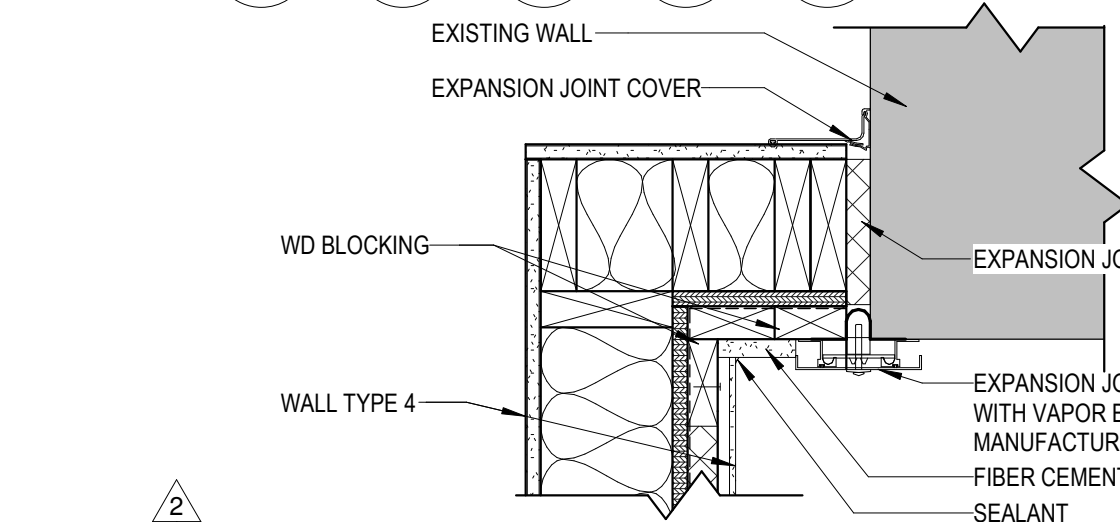
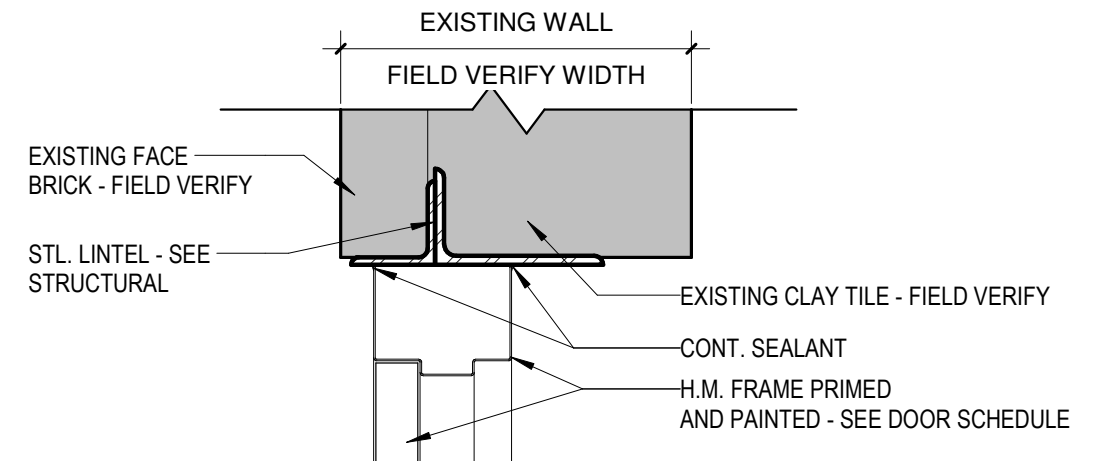
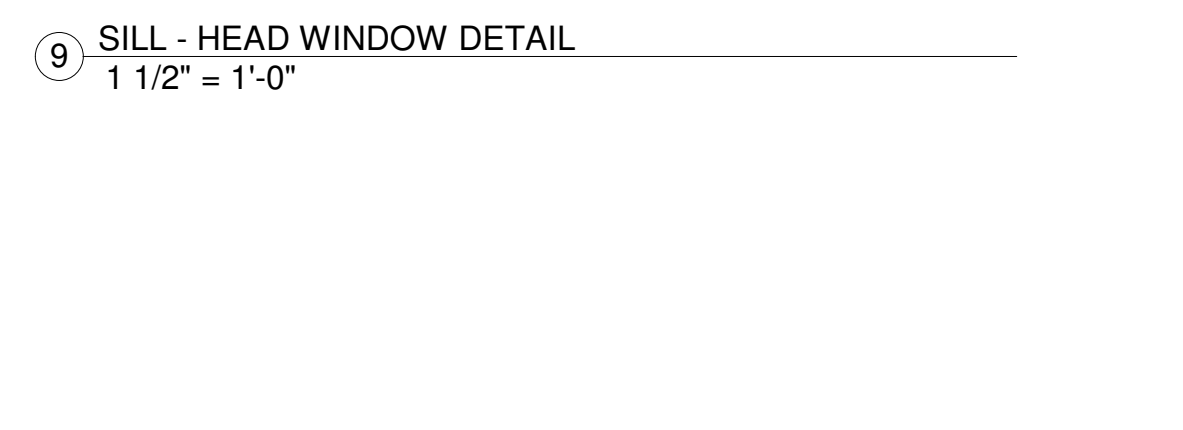
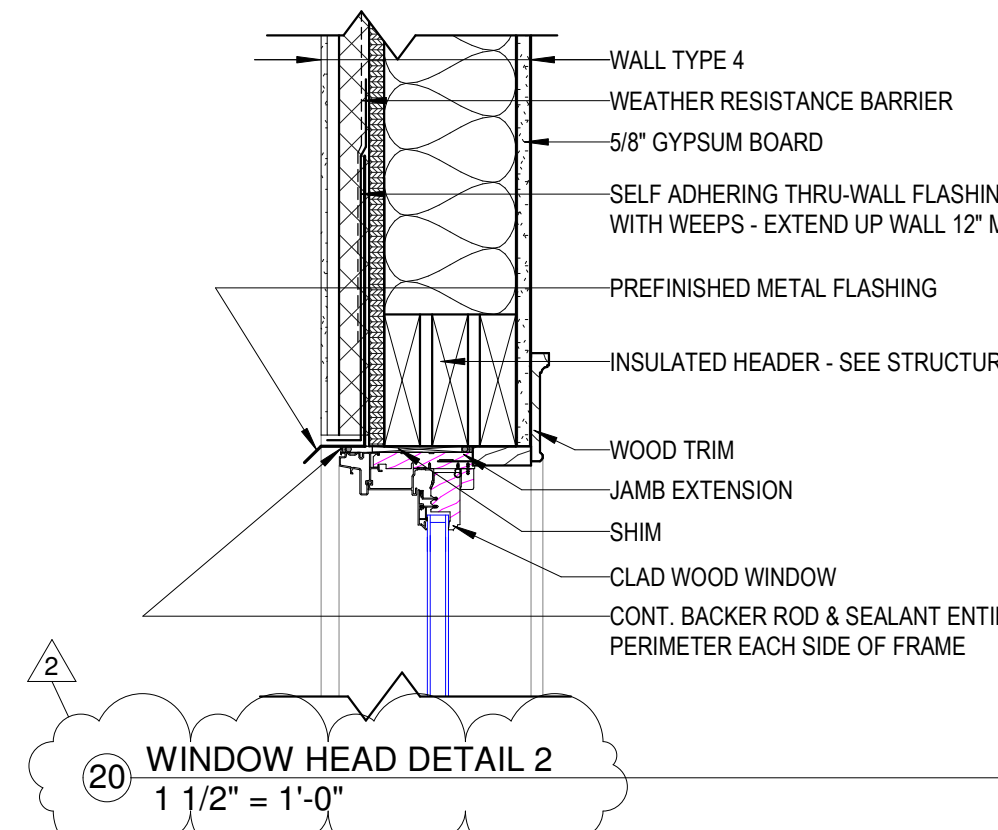
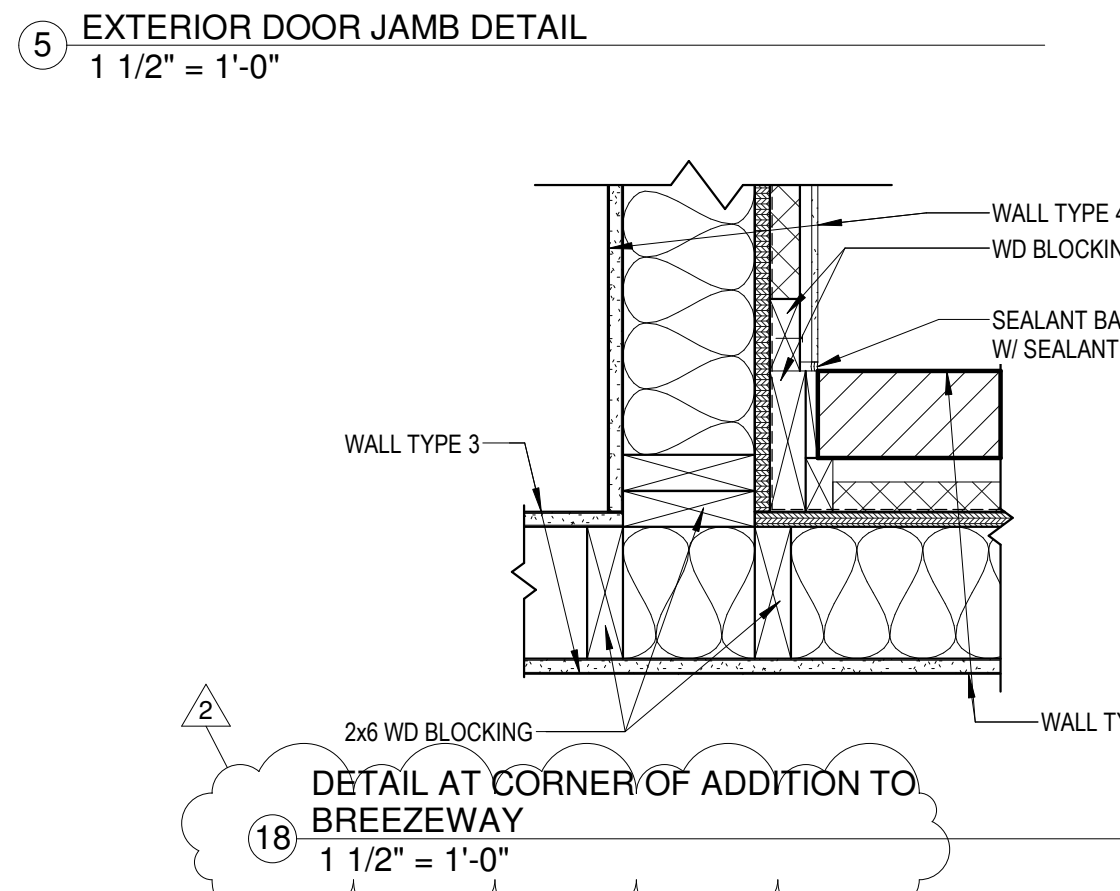
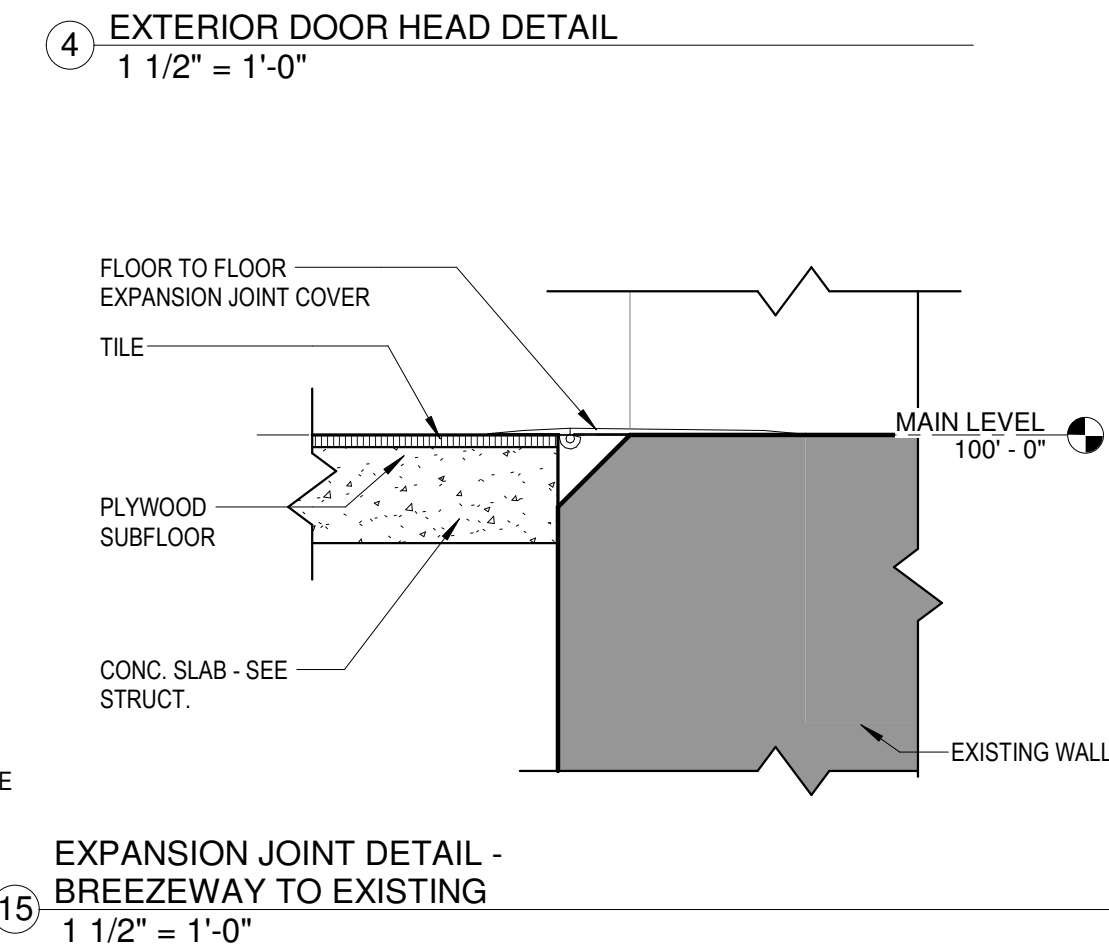
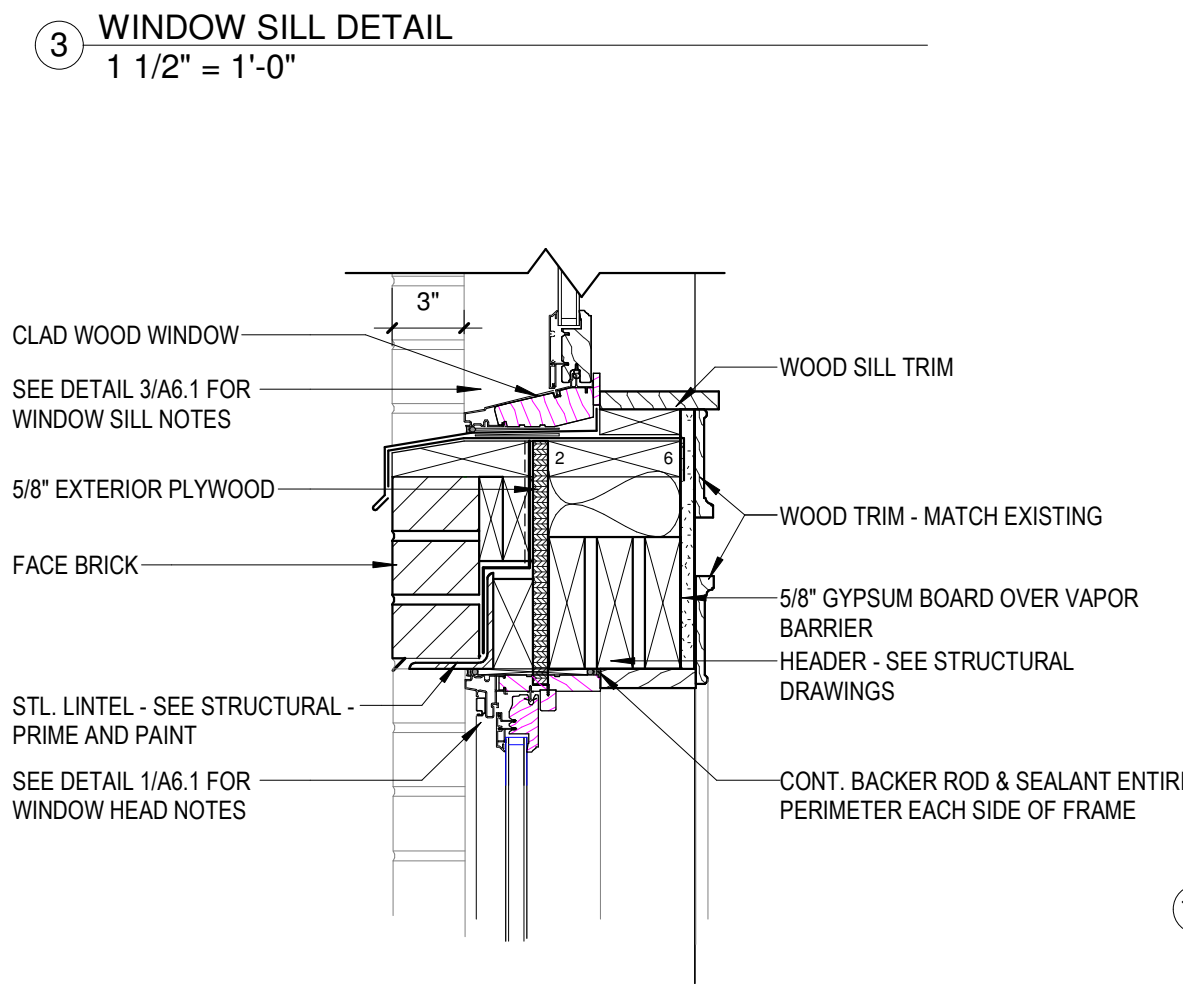
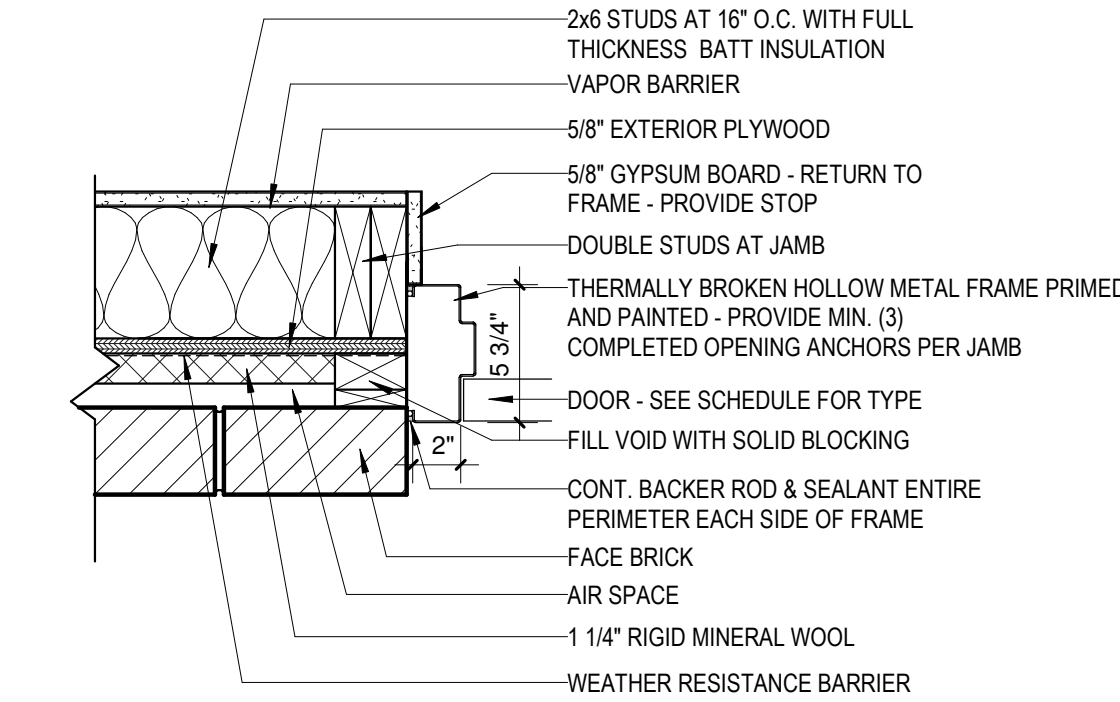
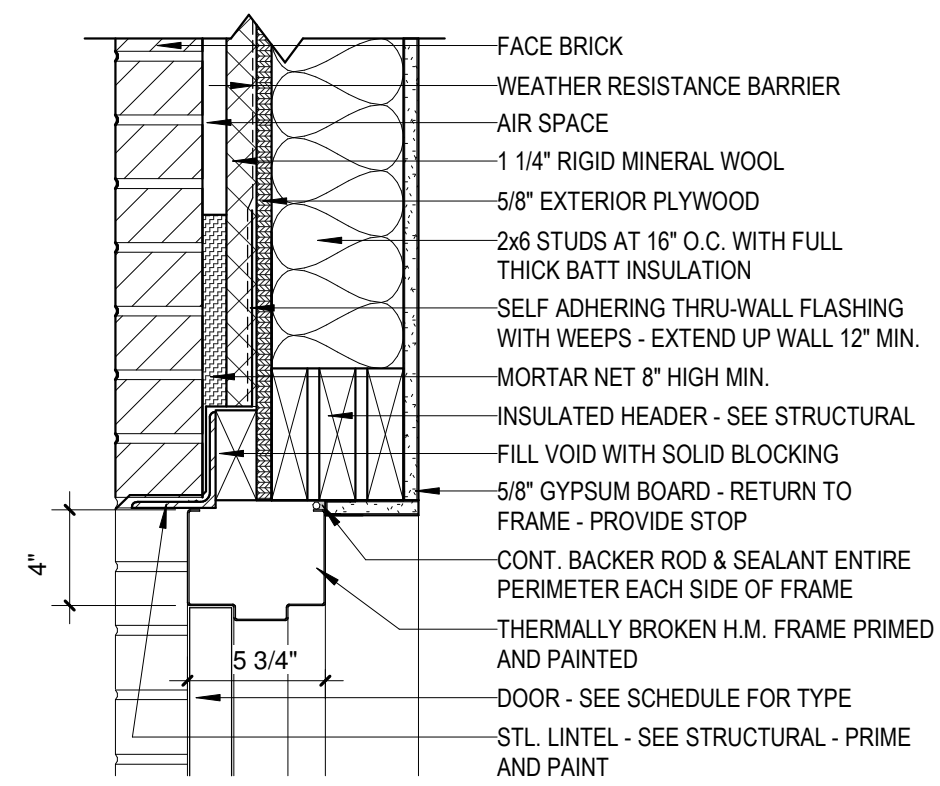
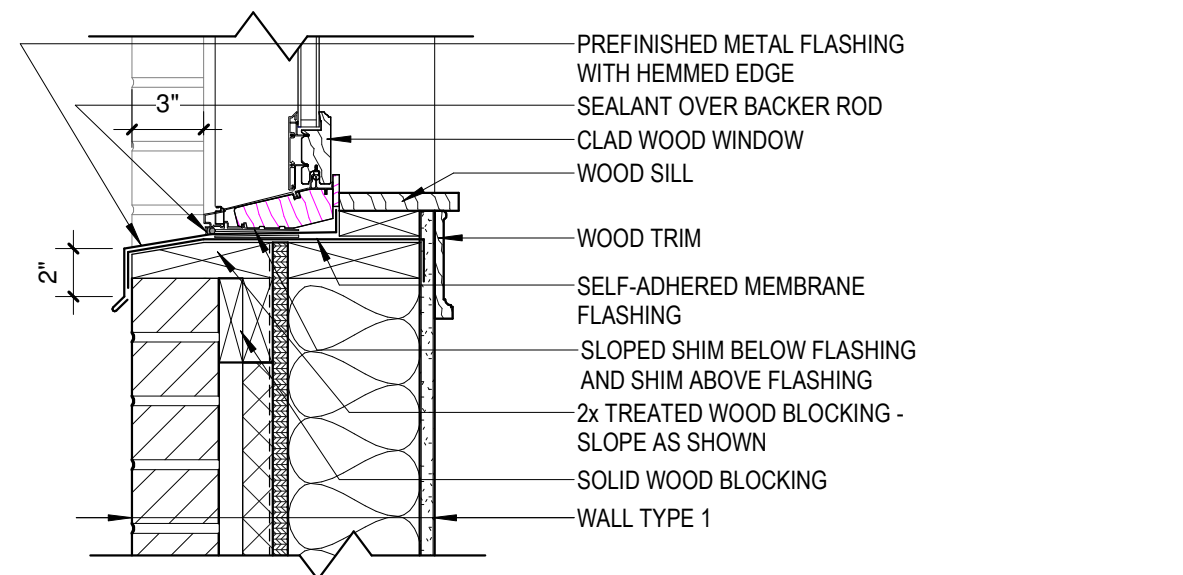
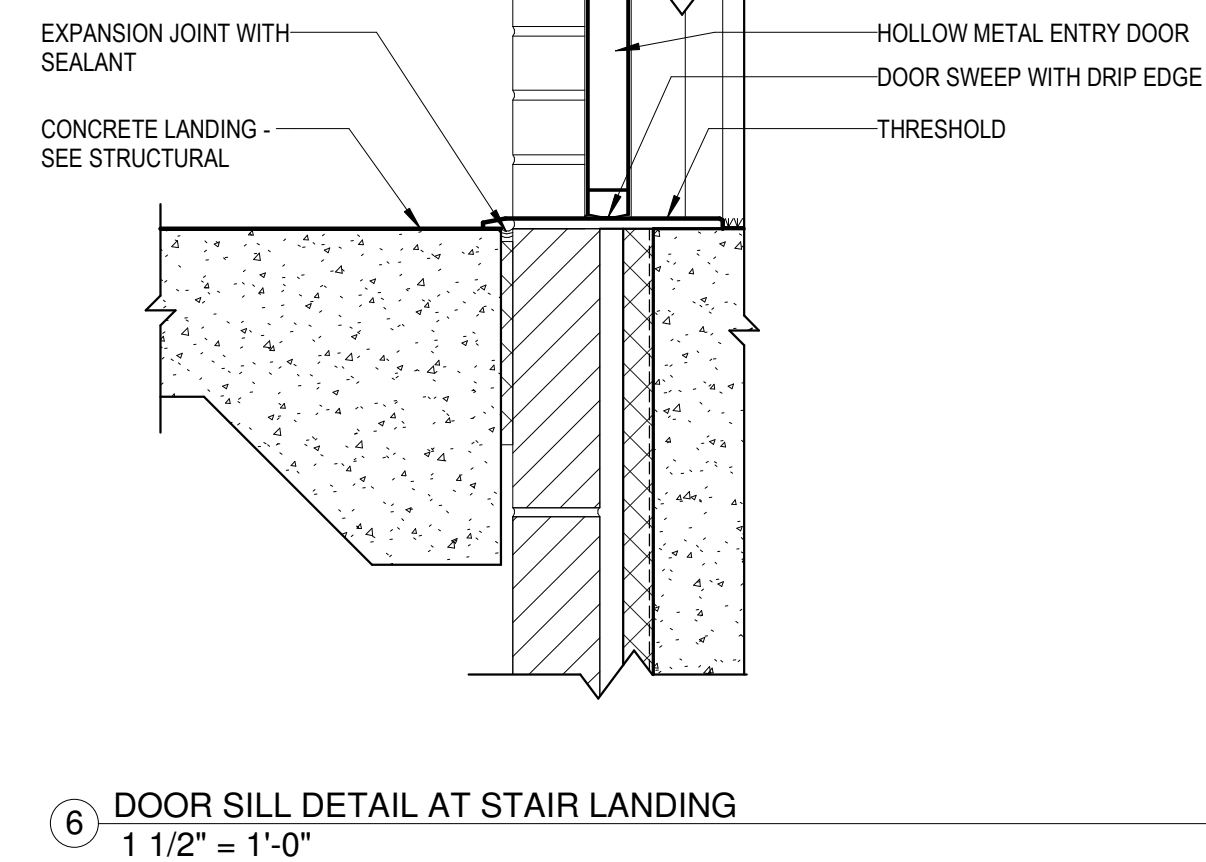
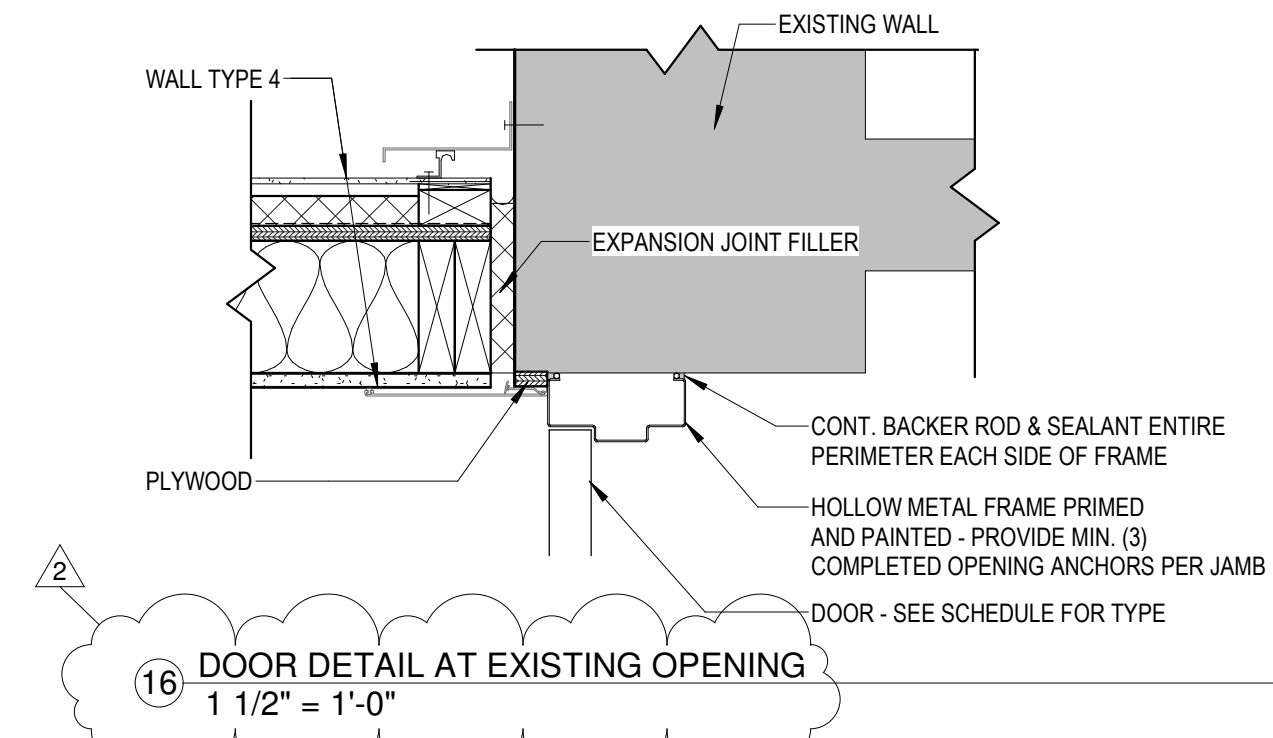
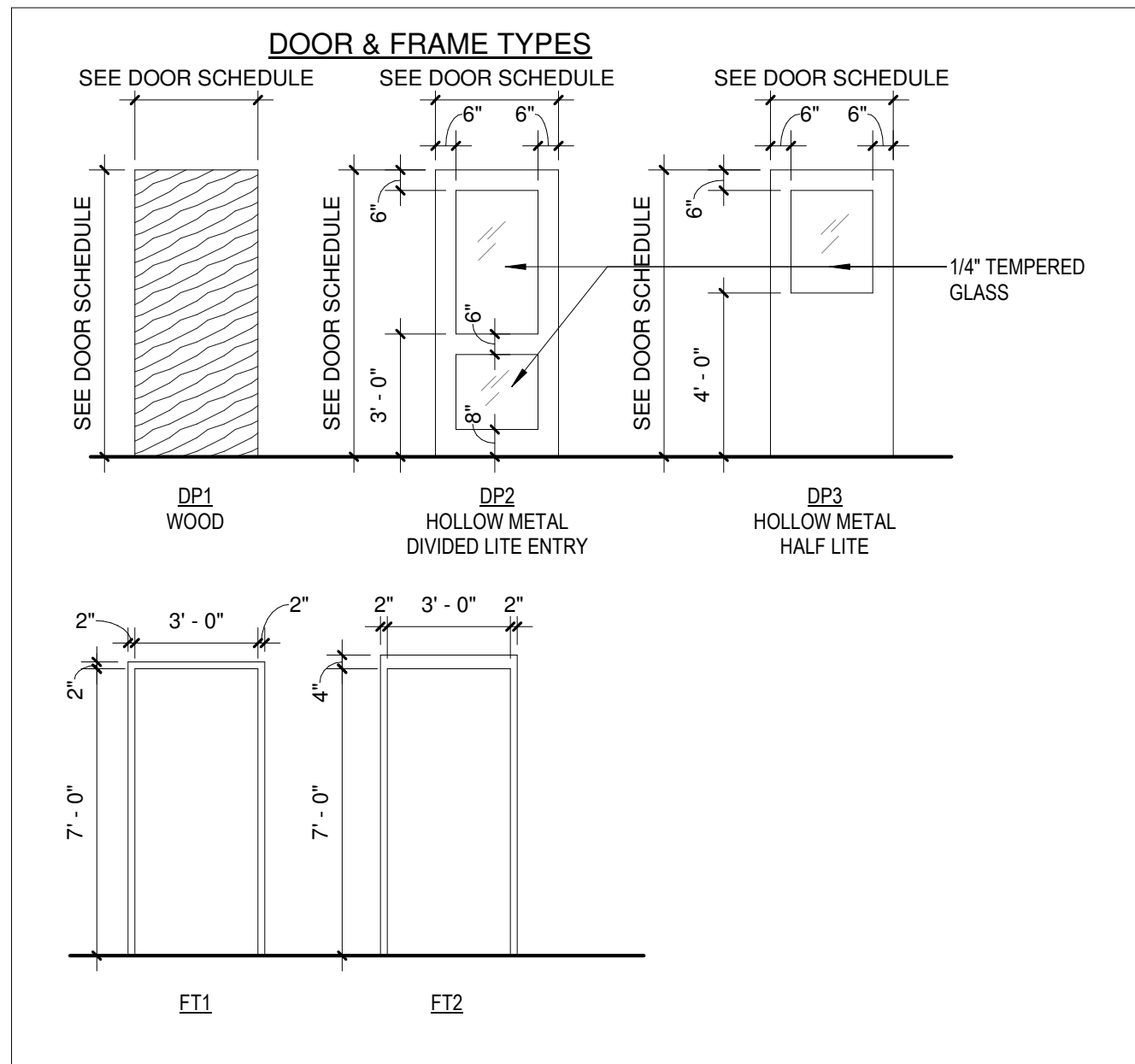
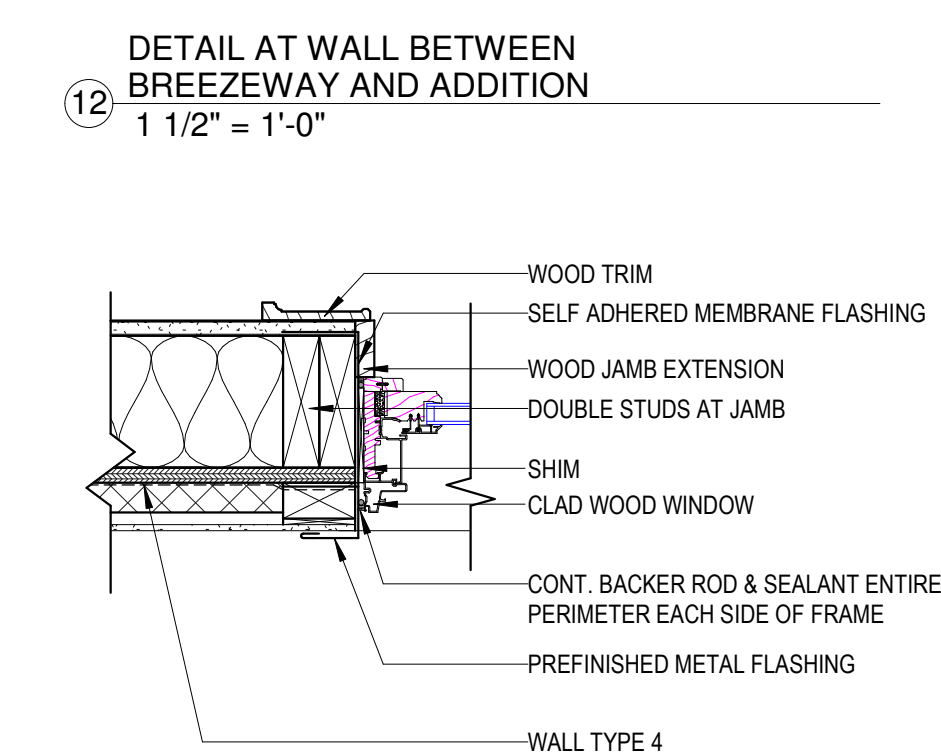
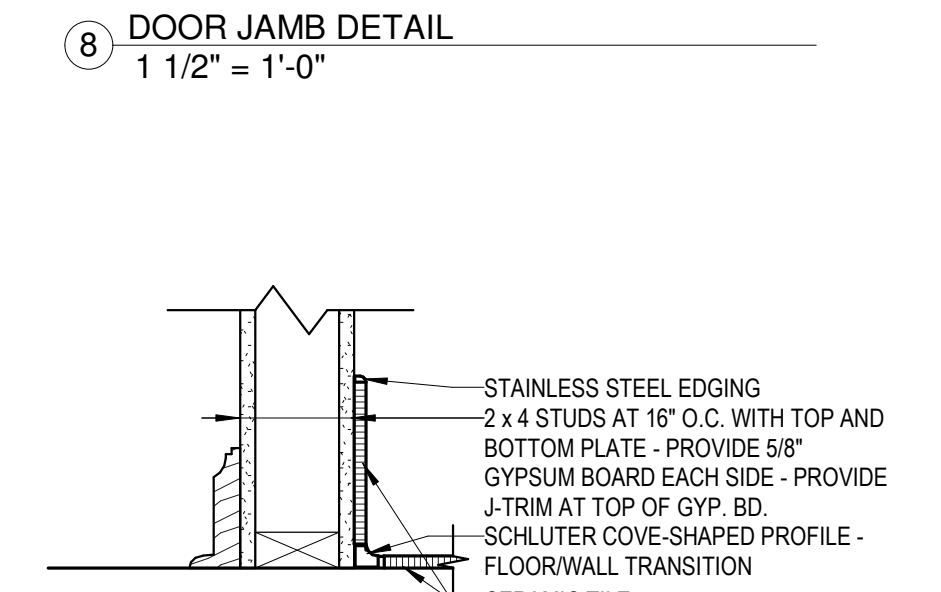
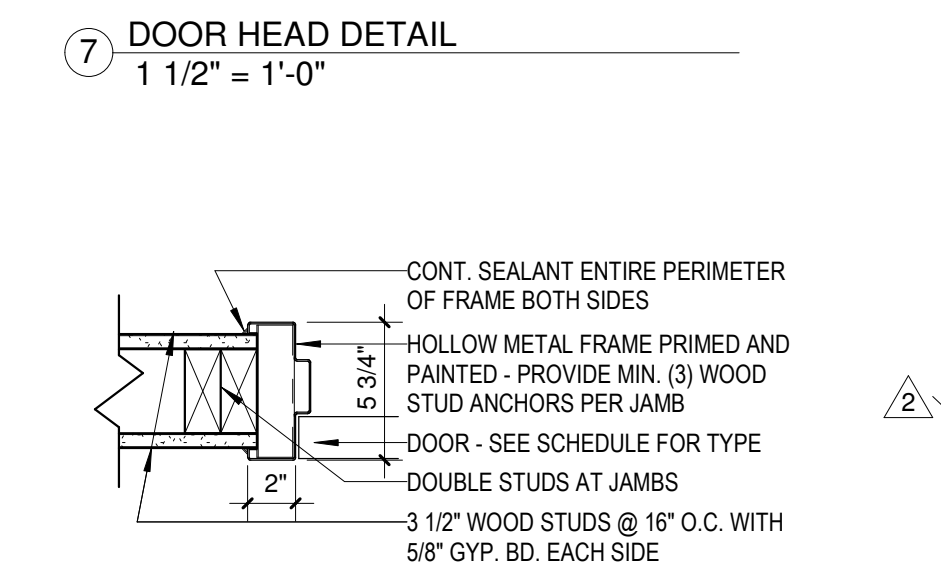
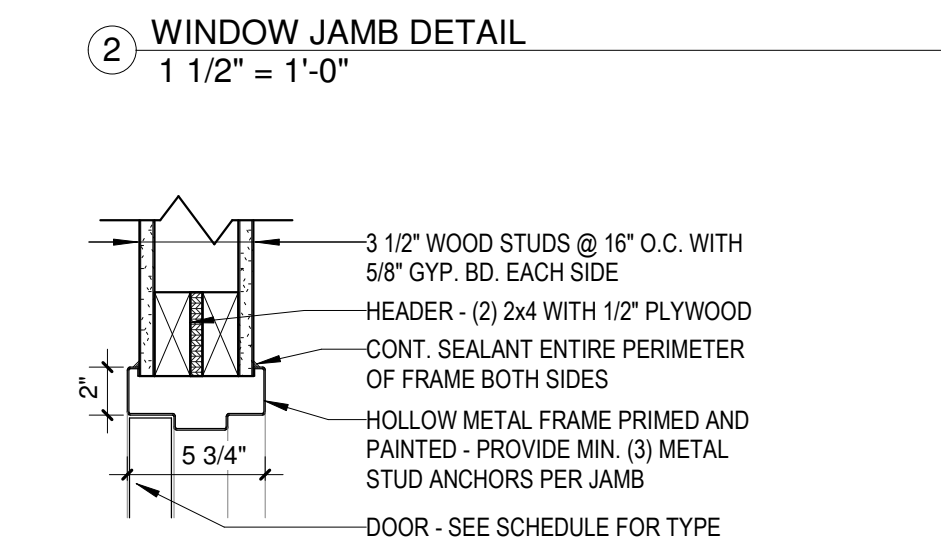
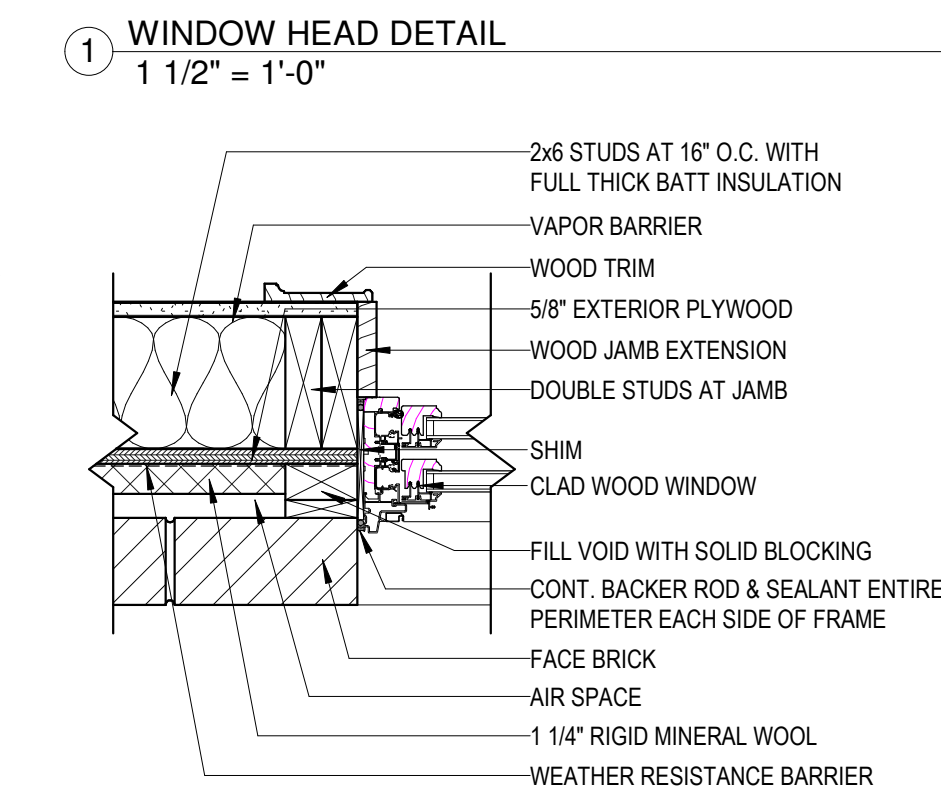
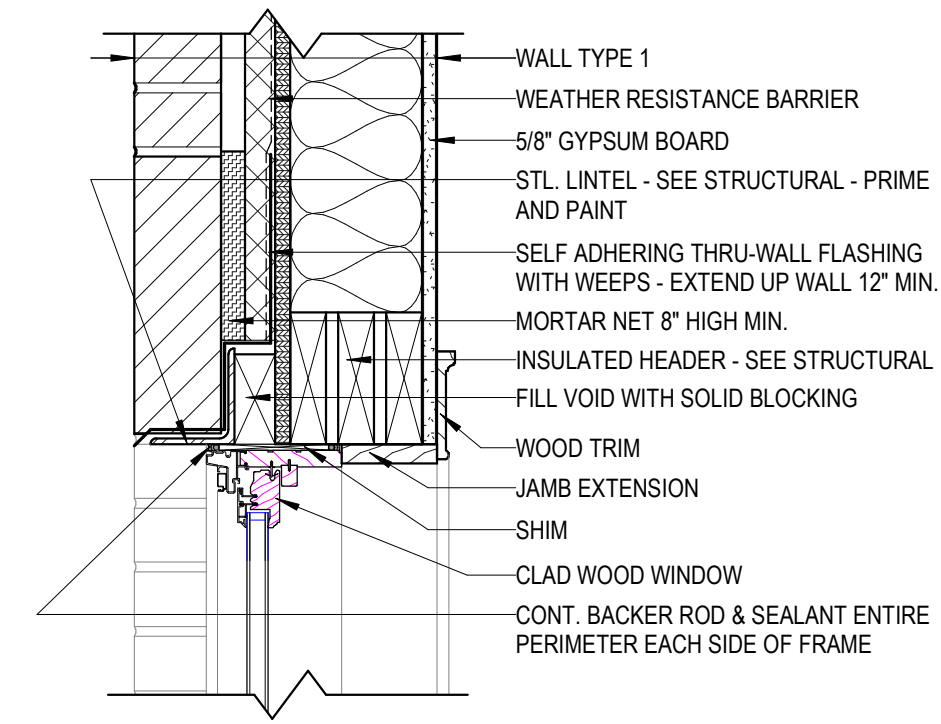
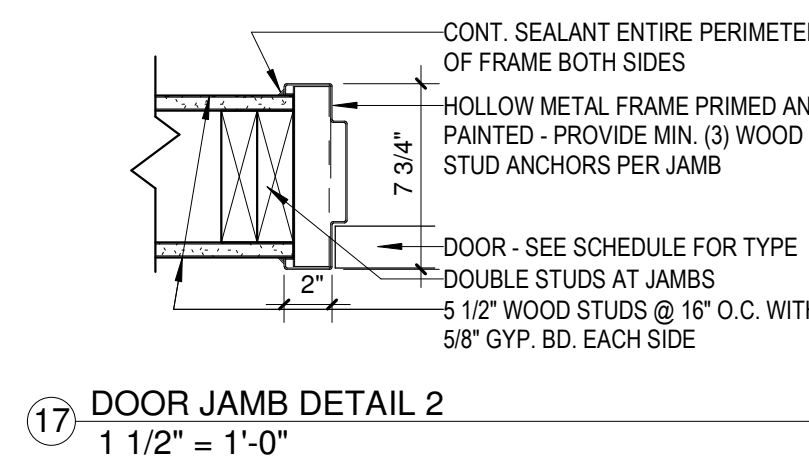
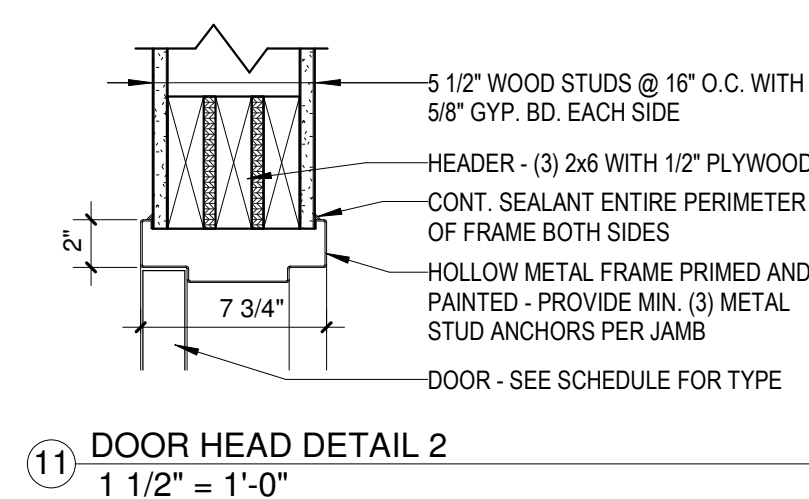
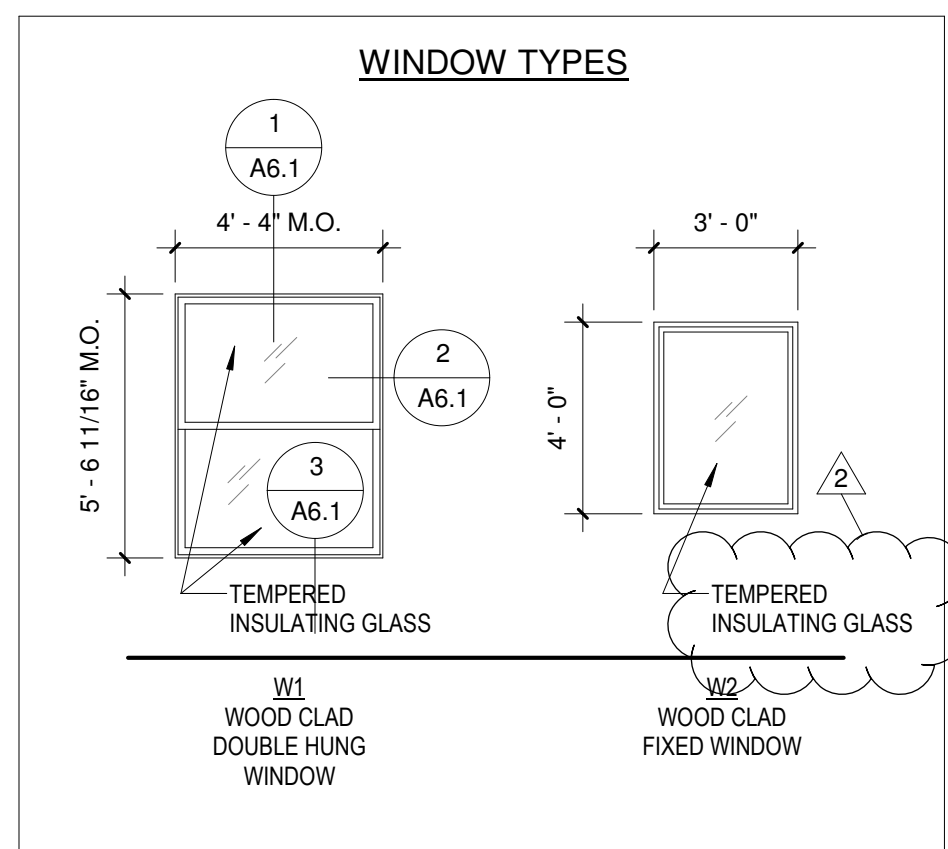
PROJECT NUMBER 24-022
 DATE 9-17-2024
 DRAWN BY JTF
 CHECKED BY TLM

A5.1

\\imga01app01\user\dfr\j\justin.fleck\My Documents\24-022 - City of Ironwood - Ironwood Carnegie Library_CD REVISED SCHEME_justin.fleck\WSGJL.rvt

Door Schedule										
Door Number	Door		Door Type	Door Mat	Frame				Hardware	Comments
	Width	Height			Type	Material	Jamb	Head		
100	3' - 0"	7' - 0"	DP2	HM	FT1	HM	16/A6.1	10/A6.1	5	
101A	3' - 0"	7' - 0"	DP2	HM	FT1	HM	17/A6.1	11/A6.1	5	
101B	3' - 0"	7' - 0"	DP3	HM	FT2	HM	5/A6.1	4/A6.1	4	
102	3' - 0"	7' - 0"	DP1	WOOD	FT1	HM	8/A6.1	7/A6.1	3	
103	3' - 0"	7' - 0"	DP1	WOOD	FT1	HM	8/A6.1	7/A6.1	6	

DOOR HARDWARE GROUPS				
HW SET 3 TOILET ROOM				
3	EA	HINGES	58BB1 4-1/2" X 4-1/2"	IVE
1	EA	PRIVACY WIND	L9040P L583-363 L283-722	SCH
1	EA	SURFACE CLOSER	4040XP REG OR PA AS REQ	LCN
1	EA	KICK PLATE	8400 10" X 2" LDW B-CS	IVE
1	EA	WALL STOP	WS406/407CVX	IVE
1	EA	GASKETING	188S	ZER
HW SET 4 EXIT DOOR FROM CHILDREN'S ROOM				
3	EA	HINGES	58BB1 4-1/2" X 4-1/2" NRP	IVE
1	EA	PANIC HARDWARE	LD99NL	VON
1	EA	SURFACE CLOSER	4040XP SCUSH	LCN
1	EA	KICK PLATE	8400 10" X 2" LDW B-CS	IVE
1	EA	WEATHERSTRIP	429	ZER
1	EA	DOOR SWEEP	8198	ZER
1	EA	RAIN DRIP	142	ZER
HW SET 5 BREEZEWAY				
3	EA	HINGES	58BB1 4-1/2" X 4-1/2"	IVE
1	EA	PASSAGE	ANSI F75	SCH
1	EA	SURFACE CLOSER	4040XP REG OR PA AS REQ	LCN
1	EA	WALL STOP	WS406/407CVX	IVE
1	EA	GASKETING	188S	ZER
HW SET 6 UTILITY CLOSET				
3	EA	HINGES	58BB1 4-1/2" X 4-1/2"	IVE
1	EA	STOREROOM	ANI F86	SCH
1	EA	WALL STOP	WS406/407CVX	IVE
1	EA	GASKETING	188S	ZER
HW SET 7 BREEZEWAY				
3	EA	HINGES	58BB1 4-1/2" X 4-1/2"	IVE
1	EA	VESTIBULE LOCK	ND80 WITH XN12-001	SCH
1	EA	SURFACE CLOSER	4040XP REG OR PA AS REQ	LCN
1	EA	WALL STOP	WS406/407CVX	IVE
1	EA	GASKETING	188S	ZER



MEYER GROUP ARCHITECTURE

306 W. Superior St. Suite 1600 Duluth, MN 55802 218.727.1330 (phone)

12450 Wayzata Blvd. Suite 227 Minnetonka, MN 55305 952.277.6603 (phone)

1022 Lakeshore Dr. Ashland, WI 54806 715.292.6493 (phone)

www.meyergruppduluth.com

REVISIONS		
No.	Description	Date
2	Addendum 2	10/7/24

IRONWOOD CARNEGIE LIBRARY

IRONWOOD, MI

DOOR AND WINDOW TYPES AND DETAILS

PROJECT NUMBER 24-022

DATE 9-17-2024

DRAWN BY JTF, MRH

CHECKED BY TLM

\\ngao01\app01\userdef\justin.fleck\My Documents\24-022 - City of Ironwood - Ironwood Carnegie Library - CD REVISED SCHEME\justin.fleck\WSGU.L\vt